

Situation 3

Drives at 1/4 speed PG VSI Through Joystick

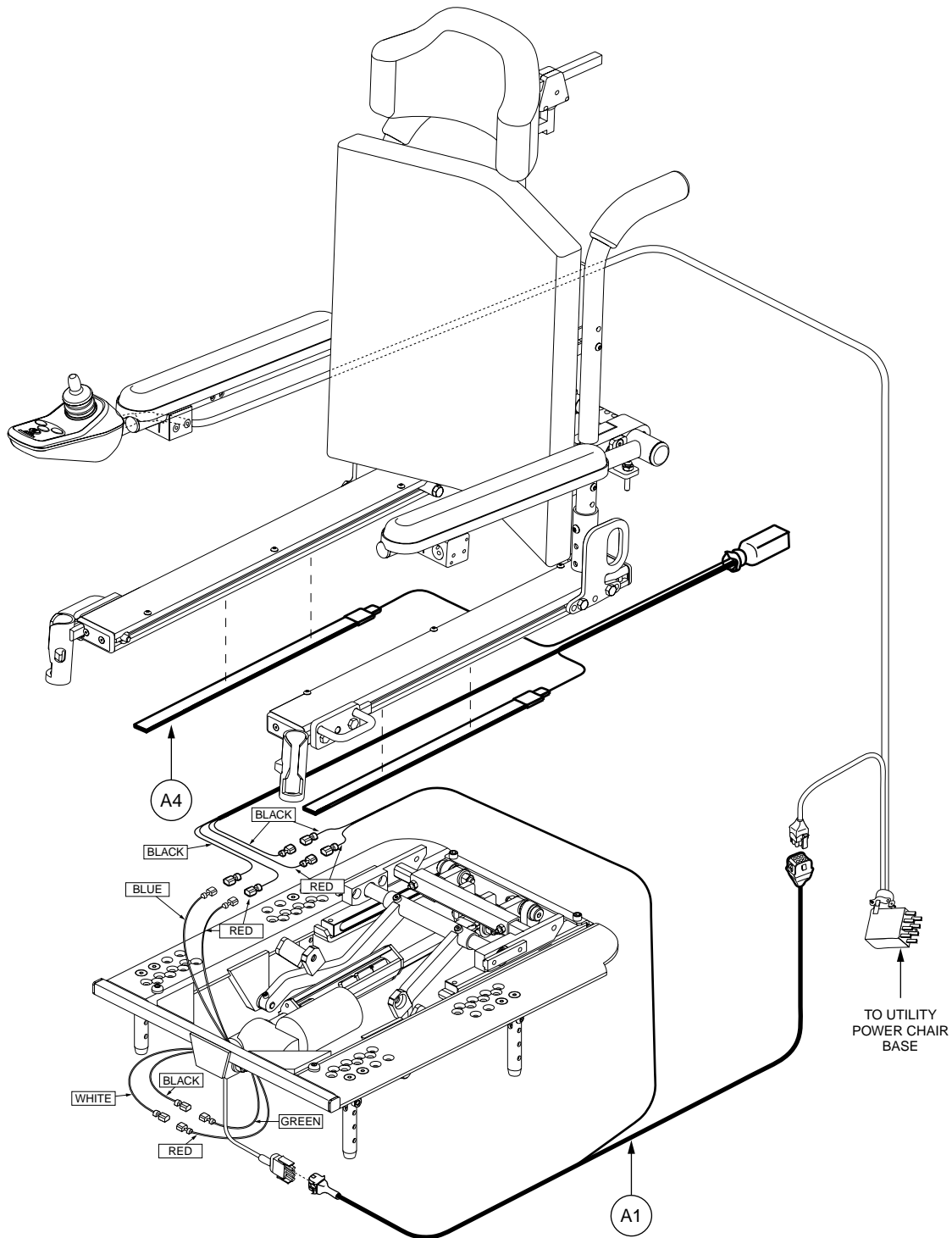


Figure 4.137. Wiring Diagram

Before you get started, be sure the tilt system is in the lowest position. Push the joystick forward. If the tilt is tilted even a little, you will hear the actuator motor spin and the seating system will tilt down. See figure 3.138.

Locate the power indicator bars on the VSI joystick. If any of the bars are flashing, this indicates a fault in the power base. See figure 4.138.

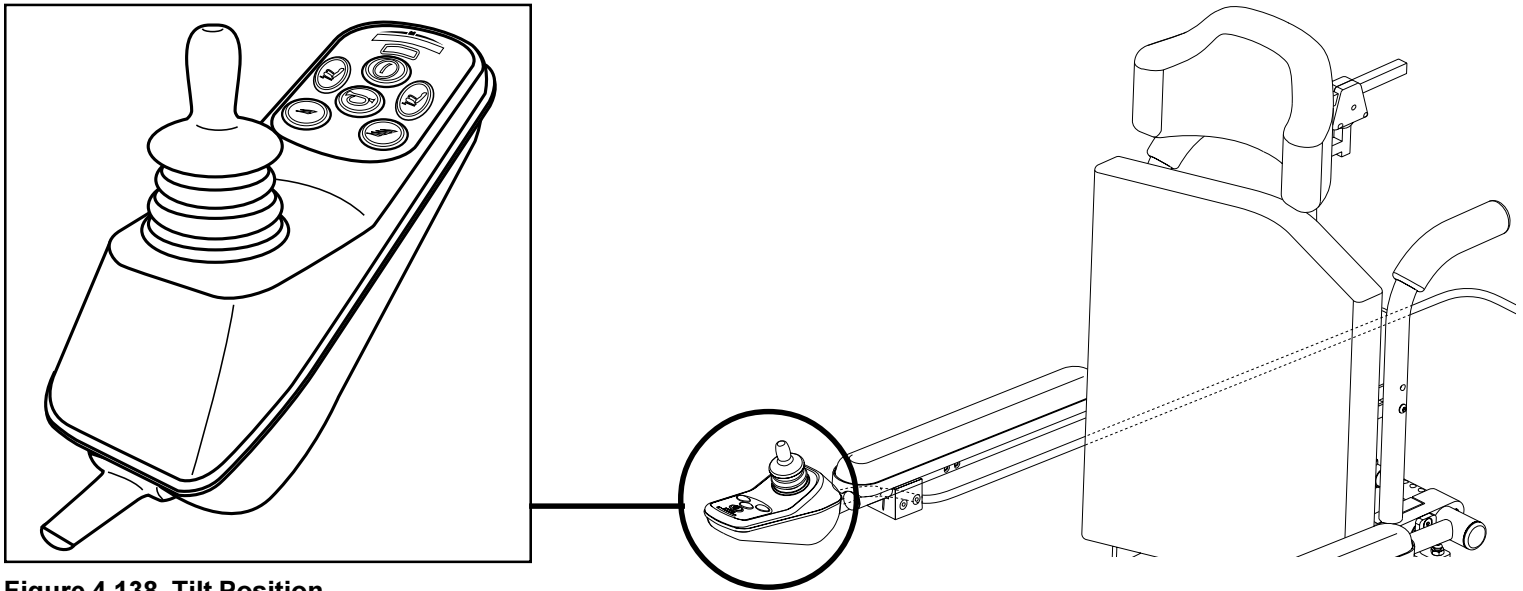


Figure 4.138. Tilt Position



If any of the bars are flashing, refer to the 9-Pin Diagnostic section of this guide to correct the fault. If no bars are flashing, proceed to the next step.

Locate the rectangular 6-pin connector of the harness (A1). Take a resistance reading from the two indicated pins. With the tilt in the full down position, there should be continuity (less than one ohm). See figure 4.139.



You will most likely read approximately 100 ohms. This is what causes the power chair to run at 1/4 speed.

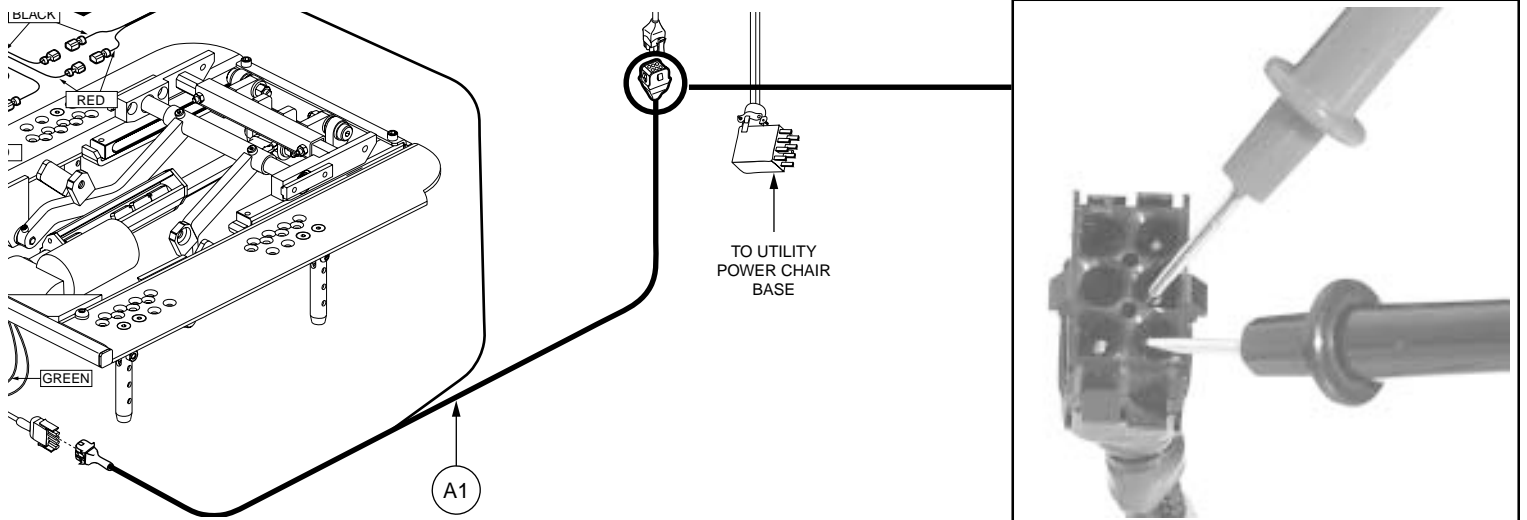


Figure 4.139. 6-Pin Connector Test

The meter reads _____ ohms



If the meter reads continuity, reconnect the harness (A1) to the VSI harness. If the unit still only drives at 1/4 speed, look for damage or corrosion on the pins. If the meter reads approximately 100 ohms, proceed to the next step.

Locate the 4-pin connector that comes from the actuator and connects to the harness (A1). Disconnect the two connectors. On the actuator side of the flat 4-pin connector, measure a resistance from one outside pin to the pin next to it, and from the other outside pin to the pin next to it. The reading should indicate continuity for each test. See figure 4.140.

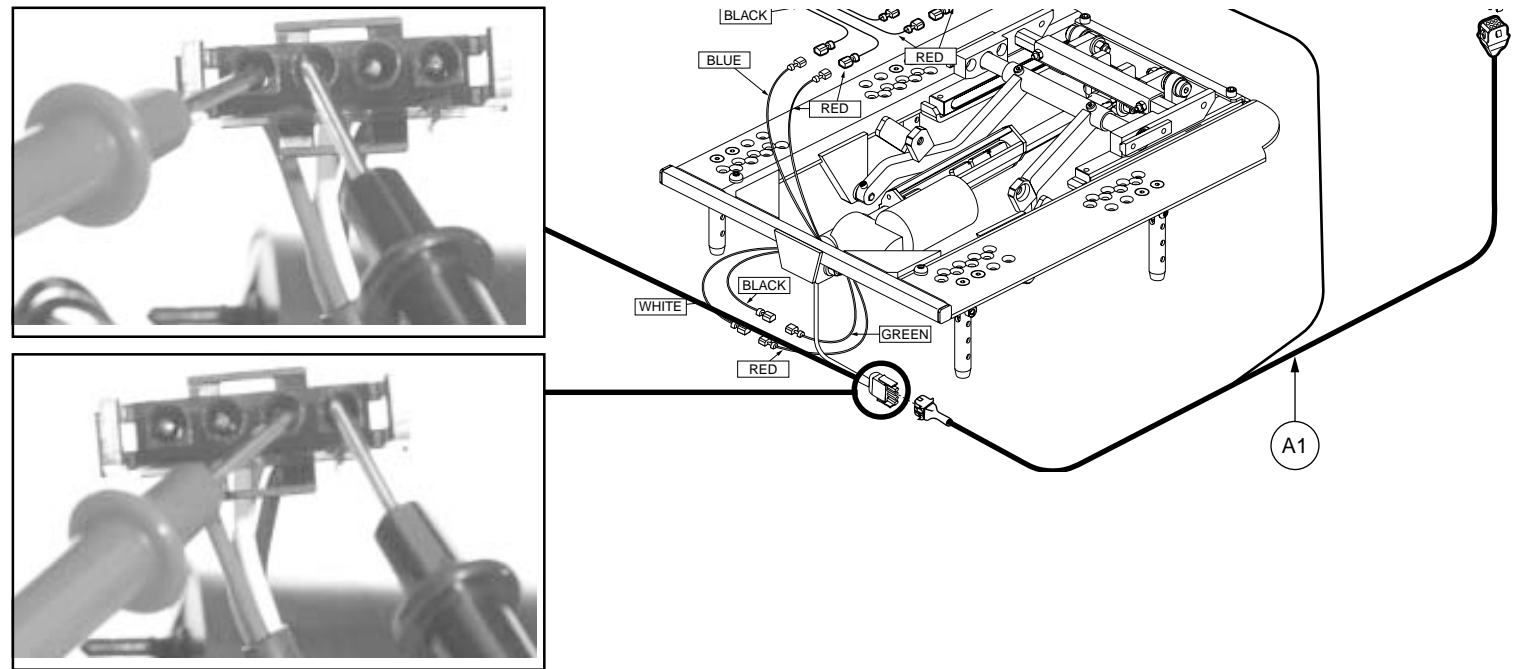


Figure 4.140. 4-Pin Connector Test

The meter reads _____ ohms

The meter reads _____ ohms

If continuity is not present, replace the actuator. If continuity is present, check the connection from the actuator to the harness (A1). Also, look for corrosion or damage to the pins. Reconnect the actuator to the harness (A1) and retest.