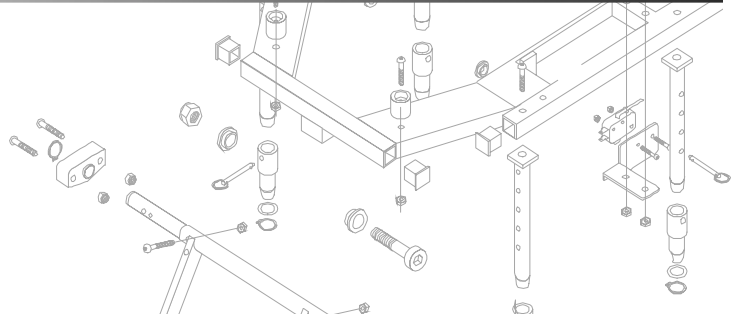


**Pride Mobility Products Corp.**

**Date:** 06/06/03  
**To:** PRIDE PROVIDERS  
**From:** PRIDE RESEARCH AND DEVELOPMENT  
**Subject:** POWER CHAIRS



## VSI CONTROLLER LOCKOUT

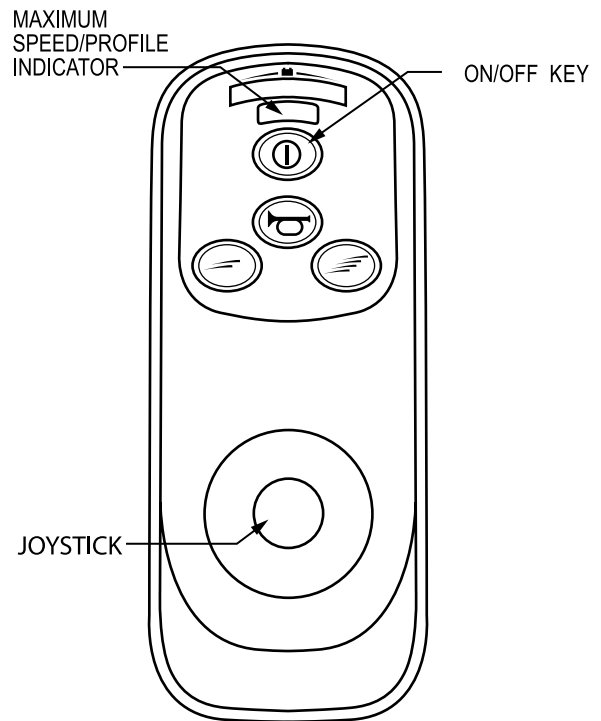
All power chairs equipped with the VSI controllers have a *lockout feature* which enables the user to lock the controller and prevent unintended use.

### To lock the VSI:

1. With the VSI powered on, press and hold the on/off key. See figure 1. After 1 second, the VSI should beep.
2. Release the on/off key.
3. Push the joystick to the full forward position until the VSI beeps.
4. Pull the joystick to the full rearward position until the VSI beeps.
5. Release the joystick. There should be a long beep.
6. The VSI is now locked.

### To unlock the VSI:

1. Press the on/off key to power on the VSI. The maximum speed/profile indicator should ripple up and down.
2. Push the joystick to the full forward position until the VSI beeps.
3. Pull the joystick to the full rearward position until the VSI beeps.
4. Release the joystick. There should be a long beep.
5. The VSI is now unlocked.



**Figure 1. VSI Keypad**

If you have any questions regarding this announcement, please contact Pride Technical Service at 1-877-800-1248. Canada providers, please phone 1-888-570-1113.