

QuantumTM 1650

Pride Mobility Products

AUS

ACN# 088 609 661

Illustrated Parts Breakdown



Pride

Your new Pride Illustrated Parts Breakdown (IPB) Manual has been compiled from the latest product information available at the time of publication. Pride Mobility Products reserves the right to make changes and updates to this manual and to the product(s) it represents. Any changes, updates, or improvements to the product(s) may result in slight differences between this manual and the product you purchased.

An IPB is an illustrated parts listing of all product components which have maintenance significance. IPB's utilize "exploded" drawings to detail the individual components for each assembly and an itemized list of reference numbers, part numbers, descriptions, and quantities per assembly. Some parts may be included in an assembly but may not be available for purchase separately. Refer to the parts list to locate the part numbers for assemblies and components for ordering what you need.

To achieve proper identification and relationship of detail parts and next higher assemblies, parts listings are presented in a convenient alphanumeric reference system. Reference numbers for parent assemblies identify one part number that can be used to order all of the components listed within it. Components of an assembly will have the same alpha character as its parent assembly.

- For example, the parent assembly part number using reference number of A1 — A4 is the only number you need to place an order for parts with references of A1, A2, A3, and A4. Instead of ordering 4 separate parts, use the parent assembly part number to get the complete assembly.

Master assembly part numbers have reference numbers that include several subassemblies. By ordering parts using master assembly part numbers, you can save a lot of time and reduce the chance for error.

- For example, A1 — G10, a master assembly reference number, includes all components of assemblies A, B, C, D, E, F, and G. Use caution when ordering assemblies. Check to see if a master assembly part number exists for the components that you need. If an entire master assembly is not needed, then the individual assembly part number (i.e. for reference number G1 — G10) will be sufficient to use for ordering.

Asterisks (*) and NOTES are used throughout this service manual to point out important information regarding assembly structure and contents.

- For example, in some illustrations, only the left OR right side is shown. In other drawings, only the front OR back is depicted. The part numbers for ALL components are listed. An asterisk will also be used to indicate which components are not illustrated.

Please note all pricing included with this manual is subject to change without prior notice from Pride.

Thank you for choosing products from Pride Mobility Products.

SECTION I.
 Main Frame Assembly 4
 2-Battery 4
 4-Battery 6

SECTION II.
 Motor Assembly 8

SECTION III.
 Freewheel Assembly 10

SECTION IV.
 Anti-tip Assembly 12

SECTION V.
 Articulating Beam Assembly 14

SECTION VI.
 Electronics Assembly 16
 2-Battery 16
 4-Battery 18

SECTION VII.
 Controller Assembly 20

SECTION VIII.
 Footrest Assembly 22
 Standard Footplate 22
 Option Footplate 24

SECTION IX.
 Wheel Assembly 26
 Pneumatic 26
 Flat-free 27

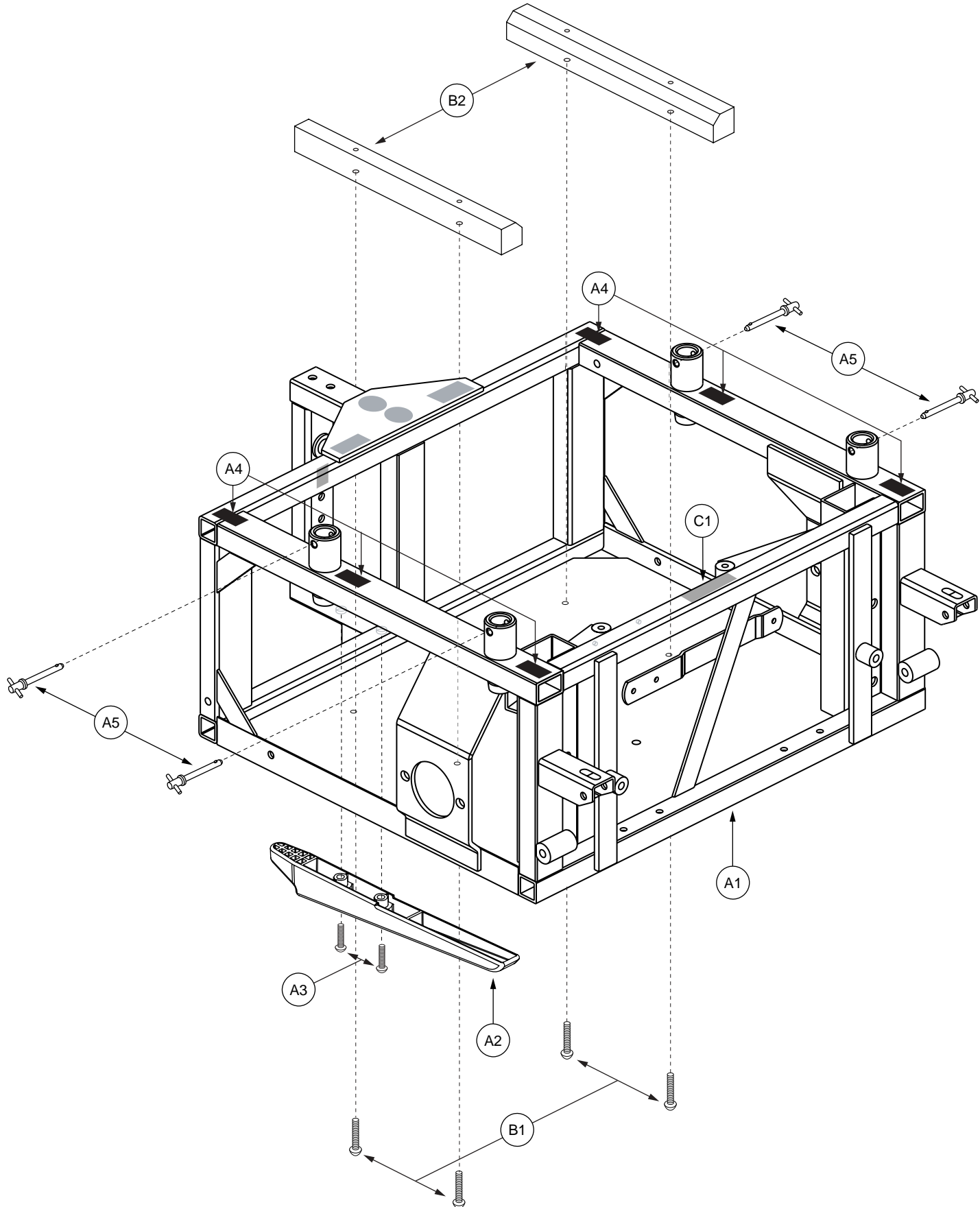
SECTION X.
 Shroud Assembly 28

SECTION XI.
 Charger Assembly 30

SECTION XII.
 Owner’s and Decal Packages 31

APPENDIX A.
 Electrical System Diagram 32
 2-Battery 32
 4-Battery 33

Standard Main Frame Assembly for 2-batteries. 4-batteries are an option for the Quantum 1650.



**Note: If an item has no callout, it is being shown for assembly purposes.*

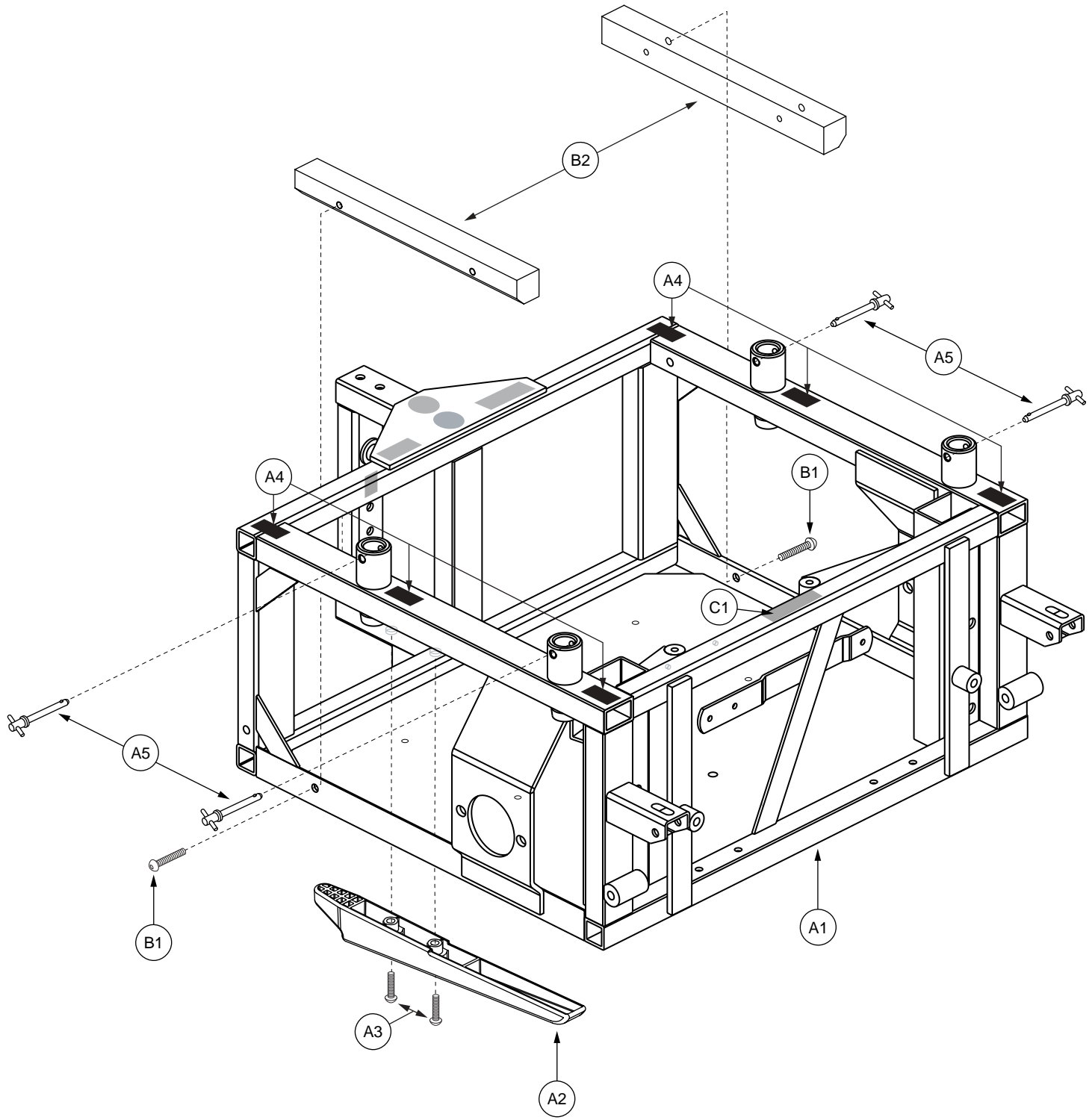
REF #	PART #	DESCRIPTION	QTY	MSRP (AU\$) ¹¹ⁱ
A1 — A5	FRMASMB6254	FRAME,ASSY,MAIN,JAZZY1650	1	2259.82
A1	DWR1650E004	FRAME,WELDMENT,MAIN,E-1650-004	1	N/A
A2	DWR1122D016	BUMPER,SKID PLATE,PLASTIC,JAZZY1122,D-1122-016	1	16.06
A3	SCRASBH1056	SCREW,BHSCS,BLACK ZINC,5/16-18 X 2.00"	2	5.36
A4	VELLOOP1002	FASTENER,1"W X 1 1/2"L,REUSABLE, LOOP	6	5.36
A5	PINCLEV1022	QUICK RELEASE PIN,SELF LOCKING,1/4" X 1.50" GRIP LENGTH,W/PLASTIC "T" HANDLE	4	10.72
B1 — B2	FRMASMB6638	BATTERY,ASSY,SPACER,JAZZY1650,2 BATTERY SYSTEM	1	240.98
B1	SCRASBH1004	SCREW,BHSCS,BLACK ZINC,1/4-20 X 0.875",GRADE 8	4	5.36
B2	DWR1650B028	BATTERY SPACER,NYLON,B-1650-028	2	123.16
*C1	DECSERN1032	DECAL,SERIAL NUMBER,4" X 6",BARCODE,W/PRIDE LOGO	1	6

Notes :

Standard Main Frame Assembly for 2-batteries. 4-batteries are an option for the Quantum 1650.

*C1 Decal is not available for replacement.

Main Frame Assembly for the 4-battery option.



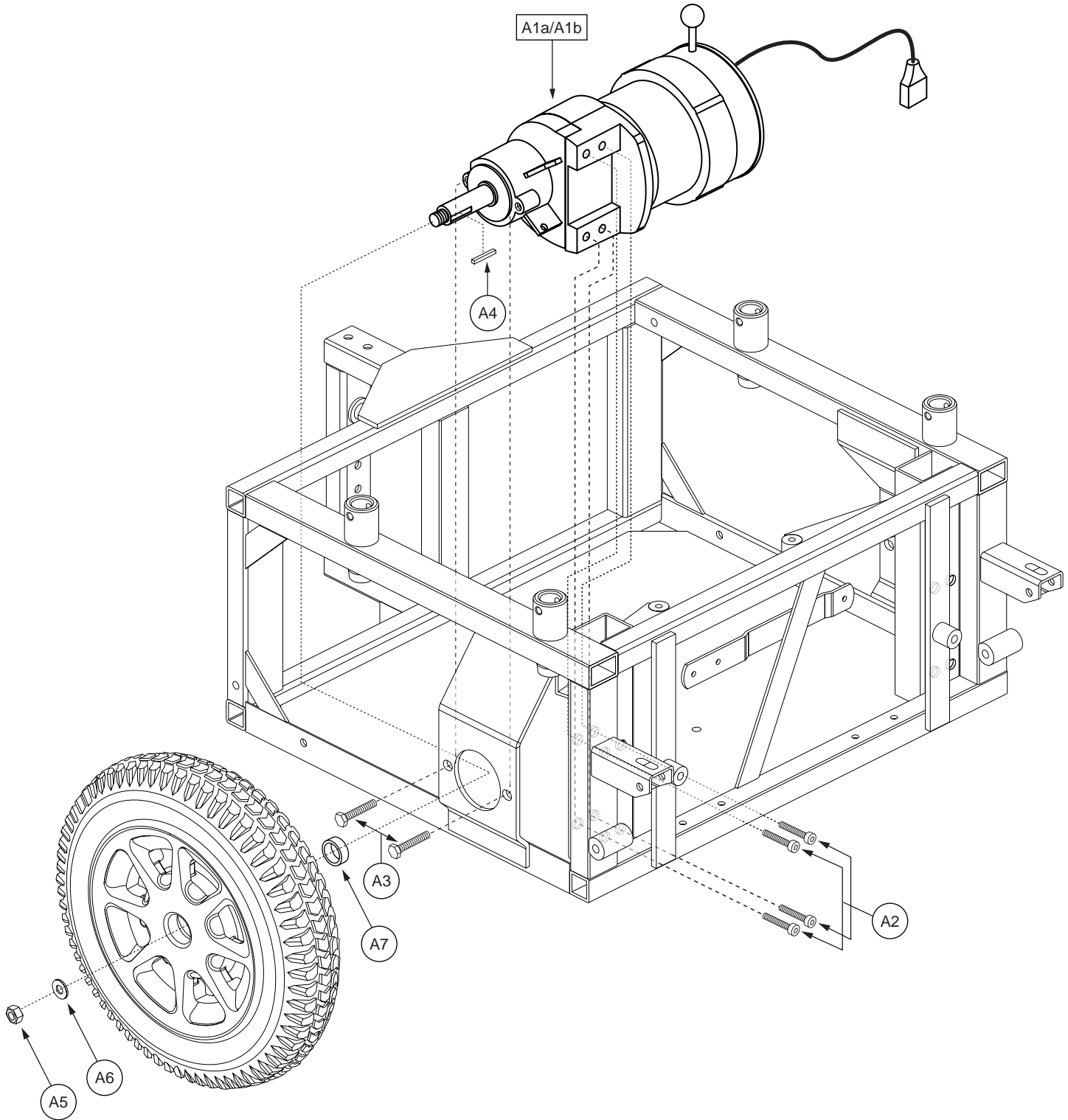
**Note: If an item has no callout, it is being shown for assembly purposes.*

REF #	PART #	DESCRIPTION	QTY	MSRP (AU\$) ¹¹ⁱ
A1 — A5	FRMASMB6254	FRAME,ASSY,MAIN,JAZZY1650	1	2259.82
A1	DWR1650E004	FRAME,WELDMENT,MAIN,E-1650-004	1	N/A
A2	DWR1122D016	BUMPER,SKID PLATE,PLASTIC,JAZZY1122,D-1122-016	1	16.06
A3	SCRASBH1056	SCREW,BHSCS,BLACK ZINC,5/16-18 X 2.00"	2	5.36
A4	VELLOOP1002	FASTENER,1"W X 1 1/2"L,REUSABLE, LOOP	6	5.36
A5	PINCLEV1022	QUICK RELEASE PIN,SELF LOCKING,1/4" X 1.50" GRIP LENGTH,W/PLASTIC "T" HANDLE	4	10.72
B1 — B2	FRMASMB6639	BATTERY,ASSY,SPACER,JAZZY1650,4 BATTERY SYSTEM	1	240.98
B1	SCRASBH1004	SCREW,BHSCS,BLACK ZINC,1/4-20 X 0.875",GRADE 8	2	5.36
B2	DWR1650B028	BATTERY SPACER,NYLON,B-1650-028	2	123.16
*C1	DECSERN1032	DECAL,SERIAL NUMBER,4" X 6",BARCODE,W/PRIDE LOGO	1	6

Notes :

Main Frame Assembly for the 4-battery option.

*C1 Decal is not available for replacement.



**Note: Right side shown. If an item has no callout, it is being shown for assembly purposes.*

REF #	PART #	DESCRIPTION	QTY	MSRP (AU\$) ¹¹ⁱ
A1 — B1	DRVASMB1588	MOTOR,ASSY,DRIVE,24 VOLT,INLINE,W/FREEWHEEL RELEASE LEVER,PAIR	1	3716.38
A1a — B1	DRVASMB1587	MOTOR,ASSY,DRIVE,24 VOLT,INLINE,W/FREEWHEEL RELEASE LEVER,RIGHT	1	1858.18
A1b — B1	DRVASMB1586	MOTOR,ASSY,DRIVE,24 VOLT,INLINE,W/FREEWHEEL RELEASE LEVER,LEFT	1	1858.18
*A1a	DRVMOTR1207	MOTOR,DRIVE,24 VOLT,INLINE,RIGHT,E-1650-008,(SHIHLIN:A9Y1X04271)	1	1799.28
*A1b	DRVMOTR1206	MOTOR,DRIVE,24 VOLT,INLINE,LEFT,E-1650-009,(SHIHLIN:A9Y1X04272)	1	1799.28
A2	SCRSHCS1128	SCREW,SHCS,BLACK ZINC,3/8-24 X 2.00"	4	5.36
A3	SCRHHCS1296	SCREW,HHCS,BLACK ZINC,M8-1.25 X 25MM,GRADE 10.9,W/NYLON PATCH	2	5.36
A4	DWR1650A003	KEY, SHAFT,STEEL,0.187" X 0.187" X 1.50",A-1650-003	1	10.72
A5	NUTNJAM1012	NUT,NYLOCK JAM,ZINC,1/2-20,GRADE 5	1	5.36
A6	WASSTND1108	WASHER,FLAT,STEEL,0.5625" ID X 1.00" OD X 0.125" TH	1	5.36
A7	DWR1650A004	SPACER,STEEL,0.782"ID X 1.00"OD X 0.36"TH,A-1650-004	1	42.84
*B1	FRMASMB6314	FREEWHEEL,ASSY,LEVER,JAZZY1650	1	74.98

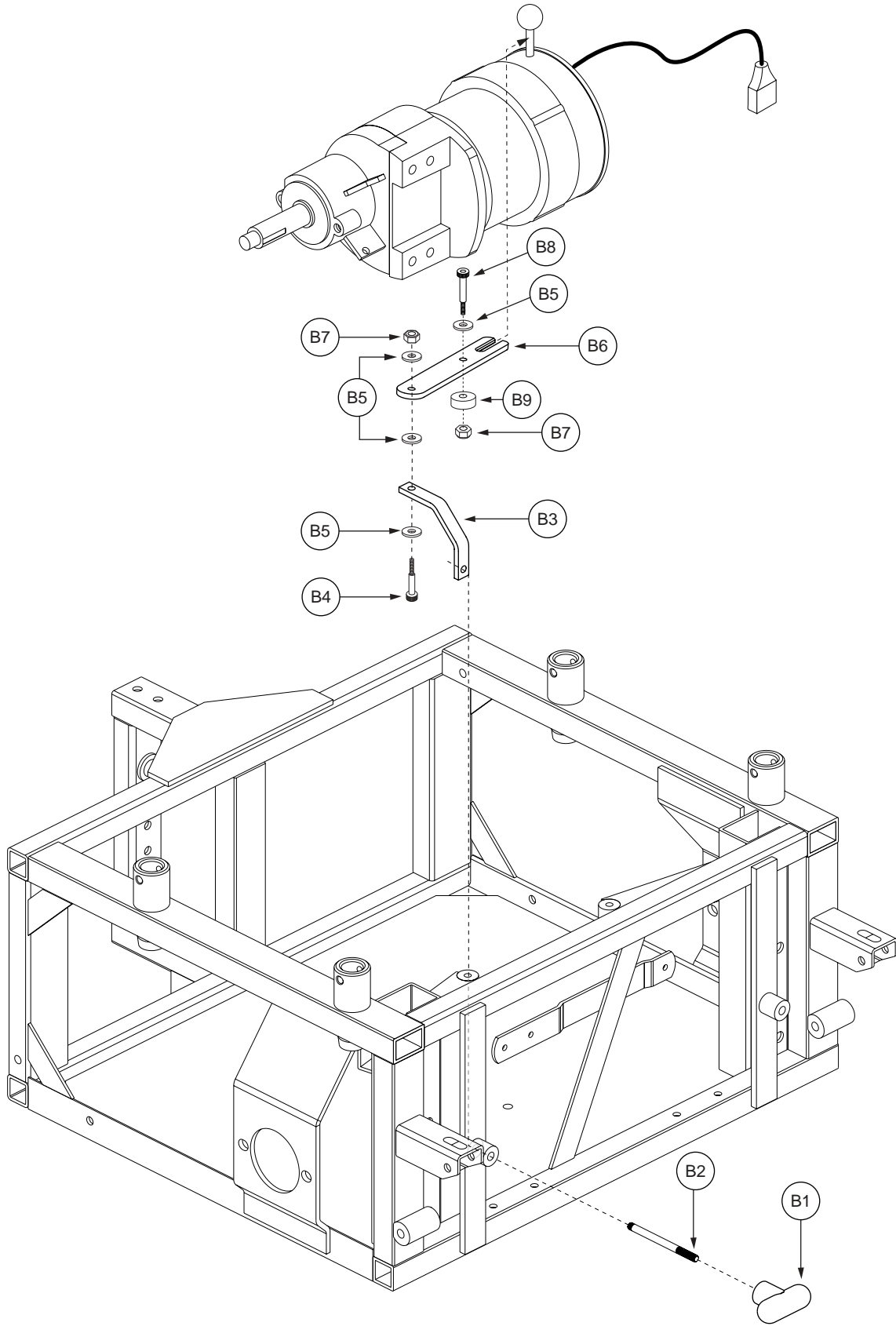
Notes :

Top-level assemblies will include components designated with corresponding lower-case letters. Parts without lower-case letters will be included in all top-level assemblies.

*A1a Contains A2 — A7.

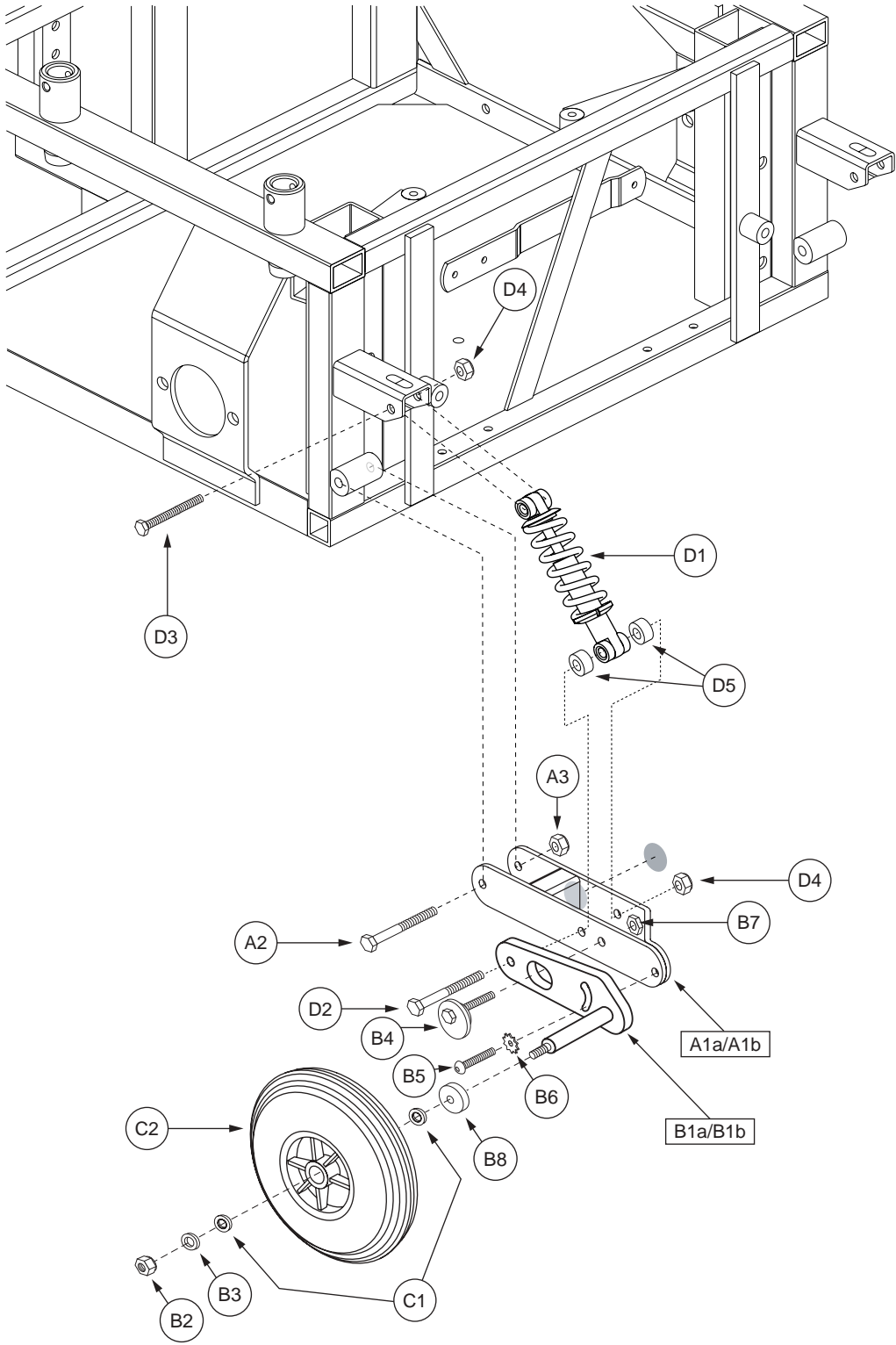
*A1b Not shown. Contains A2 — A7.

*B1 Refer to SECTION III. — Freewheel Assembly for the illustration and parts list.



**Note: Right side shown. If an item has no callout, it is being shown for assembly purposes.*

REF #	PART #	DESCRIPTION	QTY	MSRP (AU\$) ¹¹ⁱ
B1 — B9	FRMASMB6314	FREEWHEEL,ASSY,LEVER,JAZZY1650	1	74.98
B1	DWR1650B016	FREEWHEEL,T-HANDLE,B-1650-016	1	N/A
B2	DWR1650B013	BOLT,1/4-20 THREAD BOTH ENDS X 3.50" LG,FREEWHEEL ARM,B-1650-013	1	5.36
B3	DWR1650B015	FREEWHEEL,ARM,BENT,B-1650-015	1	21.42
B4	BLTASHL1006	BOLT, SHOULDER,1/4"X 1/2"	1	5.36
B5	WASSAE1003	WASHER,FLAT,BLACK ZINC,1/4,0.281" ID X 0.625" OD X 0.0625" TH,SAE	4	5.36
B6	DWR1650B011	FREEWHEEL,ARM,STRAIGHT,B-1650-011	1	58.9
B7	NUTNYLK1040	NUT, NYLOCK, 10-24, BLACK ZINC	2	5.36
B8	BLTASHL1133	BOLT, SHOULDER,1/4" X 1.75"	1	5.36
B9	SPCNYLN1022	SPACER,BLACK,NYLON,0.281" ID X 1.12" OD X 0.437" TH	1	5.36

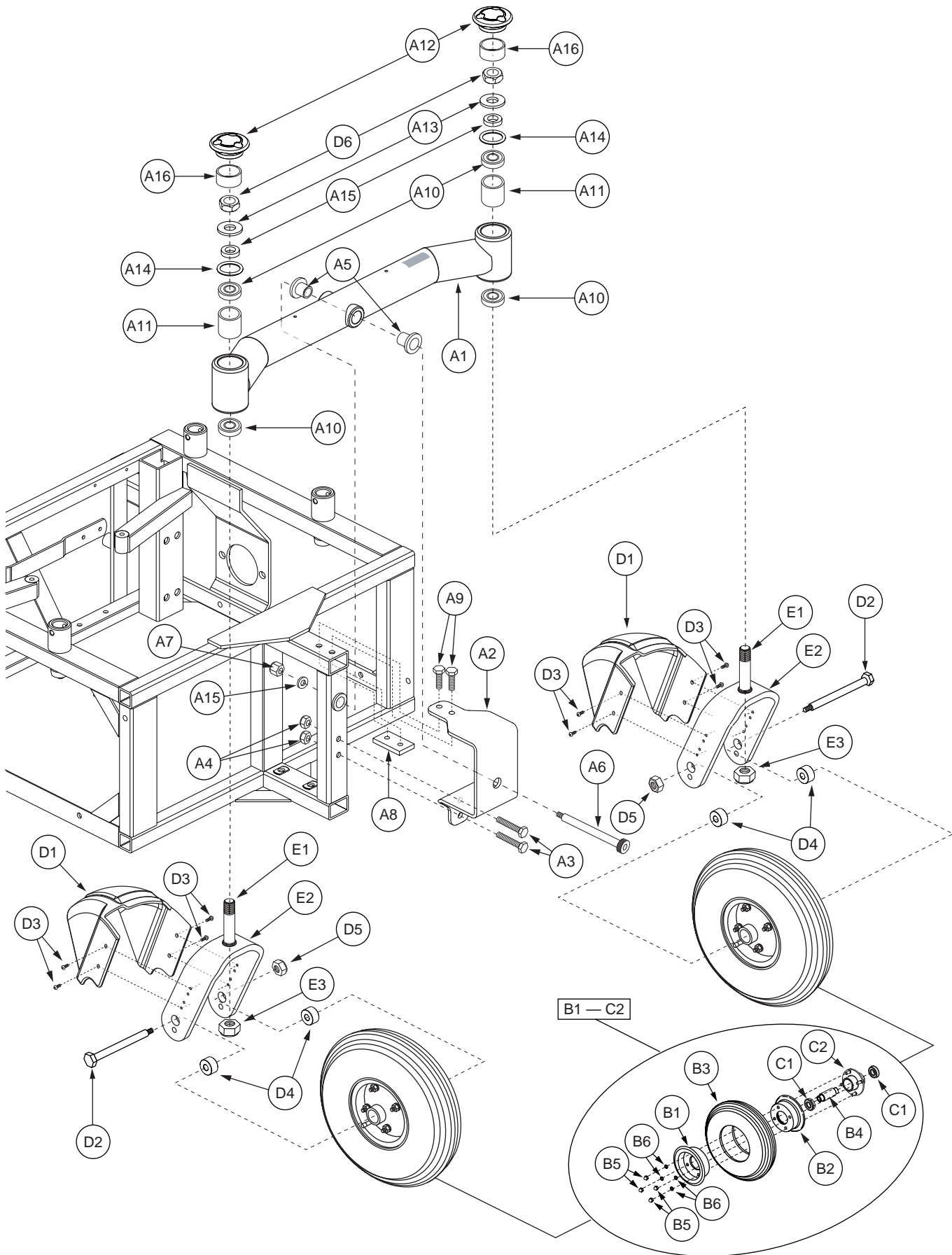


**Note: Right side shown. If an item has no callout, it is being shown for assembly purposes.*

REF #	PART #	DESCRIPTION	QTY	MSRP (AU\$) ¹¹ⁱ
A1a — D5	FRMASMB6310	ANTI-TIP,ASSY,MAIN,CAM ADJUSTABLE,W/STRUT & WHEEL,JAZZY1650,RIGHT	1	305.24
A1b — D5	FRMASMB6309	ANTI-TIP,ASSY,MAIN,CAM ADJUSTABLE,W/STRUT & WHEEL,JAZZY1650,LEFT	1	305.24
A1a — C2	FRMASMB6312	BRACKET,ASSY,ANTI-TIP,W/FORK/WHEEL/CAM,JAZZY1650,RIGHT	1	262.4
A1b — C2	FRMASMB6311	BRACKET,ASSY,ANTI-TIP,W/FORK/WHEEL/CAM,JAZZY1650,LEFT	1	262.4
A1a	DWR1650C005	ANTI-TIP,CURB CLIMBER WELDMENT,RIGHT,C-1650-005	1	85.68
A1b	DWR1650C004	ANTI-TIP,CURB CLIMBER WELDMENT,LEFT,C-1650-004	1	85.68
A2	SCRHHCS1066	SCREW, HHCS,BLACK ZINC,5/16-18 X 2 1/4",G5	1	5.36
A3	NUTNYLK1026	NUT, NYLOCK,BLACK ZINC,5/16-18	1	5.36
B1a — B8	FRMASMB2631	CAM ADJ PLATE,ANTI-TIP BRACKET,.3750" SHAFT,RIGHT	1	107.1
B1b — B8	FRMASMB2630	CAM ADJ PLATE,ASSY,ANTI-TIP BRACKET,.3750" SHAFT,LEFT	1	107.1
B1a	DWR1010C010	ANTI-TIP BRACKET WELDMENT,SLOTTED,W/3/8" BOLT,RIGHT	1	74.98
B1b	DWR1010C011	ANTI-TIP BRACKET WELDMENT,SLOTTED,W/3/8" BOLT,LEFT	1	74.98
B2	NUTNYLK1026	NUT, NYLOCK,BLACK ZINC,5/16-18	1	5.36
B3	WASSTND1002	WASHER,FLAT,BLACK ZINC,0.3125" ID X 0.6875" OD X 0.0625" TH	1	5.36
B4	DWR1170A015	ADJUSTABLE CAM WELDMENT,A-1170-015	1	32.14
B5	SCRASBH1030	SCREW,BHSCS,BLACK ZINC,5/16-24 X 1.00"	1	5.36
B6	WASETH1005	WASHER, EXTERNAL TOOTH,5/16" ID,LOCK	1	5.36
B7	NUTNYLK1032	NUT, NYLOCK,BLACK ZINC,5/16-24	1	5.36
B8	DWR1170A018	SPACER,BLACK,NYLON,0.375ID X 1.38OD X 0.313TH,A-1170-018	1	10.72
C1 — C2	WHLASMB1334	WHEEL,ASSY,200MM X 50MM,W/BEARINGS,CO-MOLDED	1	91.04
C1	BRGSLV1009	BEARING,SLEEVE,0.375"ID X 0.875"OD	2	N/A
C2	WHLATIP1003	WHEEL,ANTI-TIP,200 X 50,FOAM FILLED	1	N/A
D1 — D5	FRMASMB6313	ASSY,STRUT,5.00"LG,.586 STROKE,COIL SPRING SHOCK,JAZZY 1650	1	42.84
D1	INDPART2077	SPRING,SHOCK COIL,NON-ADJUSTABLE,BLACK,5.00" L,0.586" STROKE	1	42.84
D2	SCRHHCS1186	SCREW,HHCS,BLACK ZINC,5/16-18 X 2.75",GRADE 8	1	5.36
D3	SCRHHCS1183	SCREW,HHCS,BLACK ZINC,5/16-18 X 1.75",GRADE 8	1	5.36
D4	NUTNYLK1026	NUT, NYLOCK,BLACK ZINC,5/16-18	2	5.36
D5	WASNYLN1064	WASHER,BLACK,NYLON,0.320"ID X 0.750"OD X 0.250"TH	2	5.36

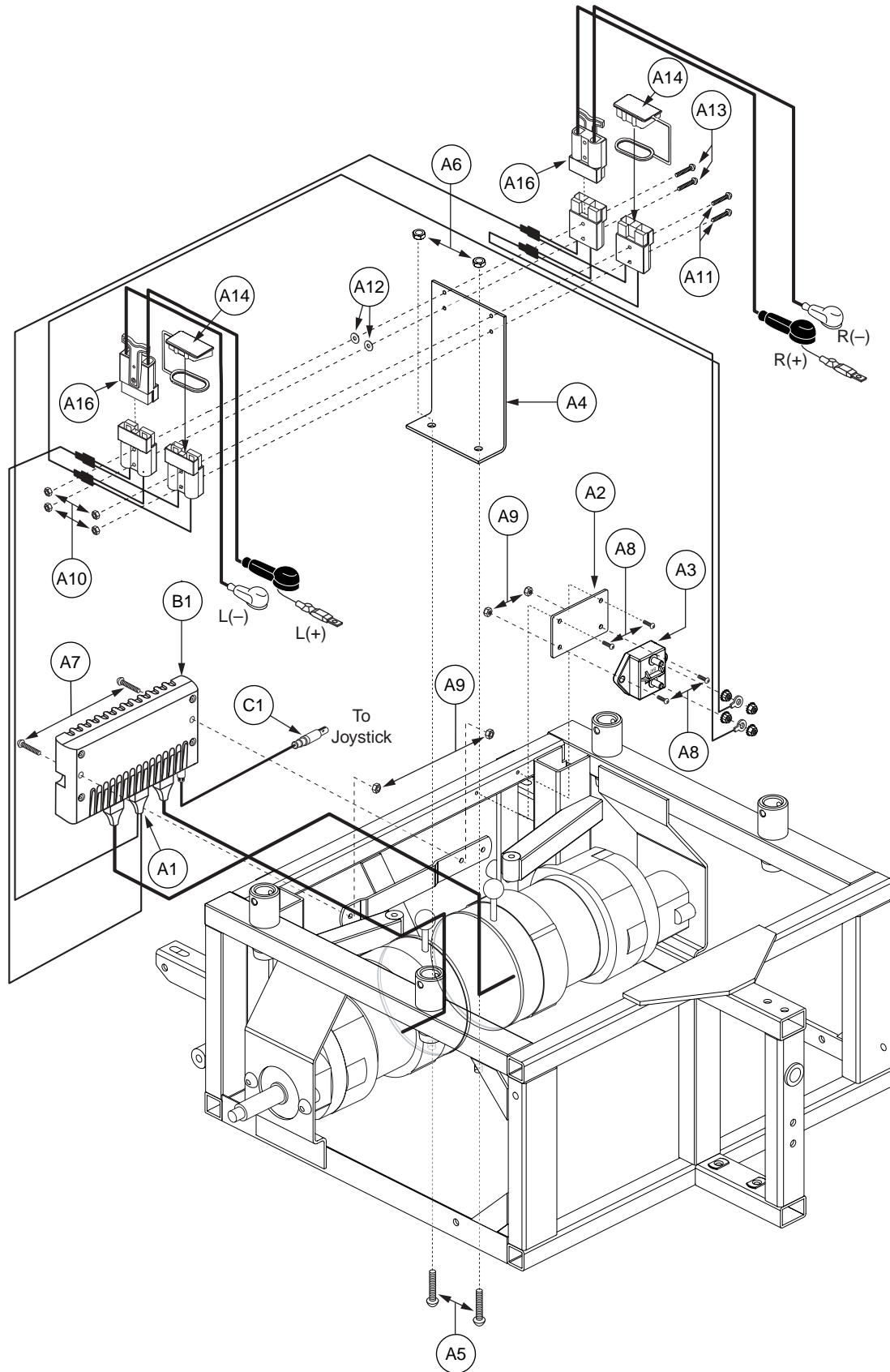
Notes :

Top-level assemblies will include components designated with corresponding lower-case letters. Parts without lower-case letters will be included in all top-level assemblies.



**Note: If an item has no callout, it is being shown for assembly purposes.*

REF #	PART #	DESCRIPTION	QTY	MSRP (AU\$) ¹¹ⁱ
A1 — E3	FRMASMB6255	ARTICULATING BEAM,ASSY,ANGLED,MAIN, W/9" FLAT FREE CASTERS, JAZZY1650	1	1751.08
A1 — A16	FRMASMB6256	ARTICULATING BEAM,ASSY,ANGLED,JAZZY1650	1	498.02
A1	DWR1650E006	ARTICULATING BEAM,WELDMENT,BLACK,ANGLED,E-1650-006	1	321.3
A2	DWR1650C020	ARTICULATING BEAM MOUNTING BRACKET WELDMENT,C-1650-020	1	133.88
A3	SCRHHCS1183	SCREW,HHCS,BLACK ZINC,5/16-18 X 1.75",GRADE 8	2	5.36
A4	NUTNYLK1026	NUT, NYLOCK,BLACK ZINC,5/16-18	2	5.36
A5	BRGFLNG1023	BEARING,FLANGE,0.625"ID X 0.75"OD X 0.625"TH X 1.00"FOD X 0.125"F,(MCMASTER CARR: 6338K425)	2	5.36
A6	BLTASHL1077	BOLT,SHOULDER,5/8" X 4.25"	1	5.36
A7	NUTNYLK1078	NUT, NYLOCK,BLACK,ZINC,1/2-13	1	5.36
A8	DWR1650B030	ATTACHMENT PLATE,ARTICULATING BEAM,B-1650-030	1	21.42
A9	SCRHHCS1156	SCREW,HHCS,BLACK ZINC,5/16-18 X 0.75",GRADE 8	2	5.36
A10	BRGSLV1021	BEARING,BALL,0.625"ID X 1.378"OD X 0.432"TH,620210-2NSE,A-1500-032	4	5.36
A11	DWR1500A029	SPACER,STEEL,0.630"ID X 1.00" OD X 0.82" TH,A-1500-029	2	10.72
A12	DWR1500B024	END CAP,PLASTIC,ARTICULATING PIVOT BEAM BARREL,B-1500-024	2	5.36
A13	DWR1500A046	WASHER,STEEL,0.630" ID X 1.365" OD X 0.1345" (10GA) TH,CUSTOM,A-1500-046	2	5.36
A14	HDWINDV1041	O-RING,NEOPRENE,1.0625"ID X 1.3125"OD X 0.1250"W,SIZE 215,DUROMETER SHORE A 70 +/-5,(MSC 31954050)	2	5.36
A15	DWR1500A045	SHIM,STEEL,5/8" BOLT SIZE,0.630-0.635" ID X 1.00" OD X 0.093",A-1500-045	3	5.36
A16	DWR1500B071	SPACER,STEEL,26MM ID X 30MM OD X 14.5MM TH,B-1500-071	2	5.36
B1 — E3	FRMASMB3483	FORK,ASSY,CASTER,W/9" FLAT FREE WHEEL,QUANTUM BLAST	2	524.8
B1 — C2	WHLASMB1427	WHEEL,ASSY,FLAT FREE,9",2.80/2.50-4,AQUA TREAD PATTERN	1	224.92
B1	WHLRIMS1015	WHEEL,RIM,BLACK,5",FRONT, EXTERIOR W/VALVE STEM HOLE, XL	1	69.62
B2	WHLRIMS1020	WHEEL,RIM,BLACK,3.95"DIAM X 1.65 DEPTH,REAR, INNER	1	32.14
B3	TIRSOLI1034	TIRE,FLAT FREE,2.80 X 2.50 PRIMO DURATRAP	1	187.42
B4	DWR1500B056	SPACER,STEEL,9" CASTER BEARING,0.377" ID X 0.623" SHOULDER DIA,B-1500-056	1	5.36
B5	NUTSTD1001	NUT,5/16-24	4	5.36
B6	WASLOCK1031	WASHER,LOCK,ZINC,0.3125" ID X 0.50" OD X 0.0937" TH	4	5.36
C1 — C2	WHLASMB1559	WHEEL,ASSY,HUB,2.75"BC,W/BALL BEARINGS	1	48.2
C1	BRGBTRA1007	BEARING, BALL,0.625"ID X 1.375"OD X 0.4331",DOUBLE SEAL W/SNAP RING	2	5.36
C2	DWR1000C357	WHEEL,HUB,2.75"BC,W/STUDS,C-1000-357	1	48.2
D1 — E3	FRMASMB3484	FORK,ASSY,CASTER,FRONT,QUANTUM BLAST	1	299.88
D1	DWR1500D020	CASTER FORK FENDER,PLASTIC,D-1500-020	1	10.72
D2	SCRHHCS1203	SCREW,HHCS,BLACK ZINC,3/8-16 X 4.50"	1	5.36
D3	SCRPPTC1001	SCREW, PPH,8-32 X 3/8",G5, SELF-TAP	4	5.36
D4	DWR1500A021	SPACER,STEEL,0.377"ID X 1.00"OD X 0.52"TH,A-1500-021	2	10.72
D5	NUTNYLK1006	NUT, NYLOCK,BLACK ZINC,3/8"-16	1	5.36
D6	NUTNJAM1022	NUT,NYLOCK JAM,ZINC,5/8-18	2	5.36
E1 — E3	FRMASMB3754	WHEEL,ASSY,CASTER FORK,9",W/PIVOT STUD,D-1500-024	1	257.04
E1	DWR1500B007	PIVOT STUD,CASTER FORK,5/8-18,,B-1500-007	1	5.36
E2	DWR1500D012	CASTER,FORK,9",QUANTUM BLAST,D-1500-012	1	N/A
E3	NUTNJAM1022	NUT,NYLOCK JAM,ZINC,5/8-18	1	5.36

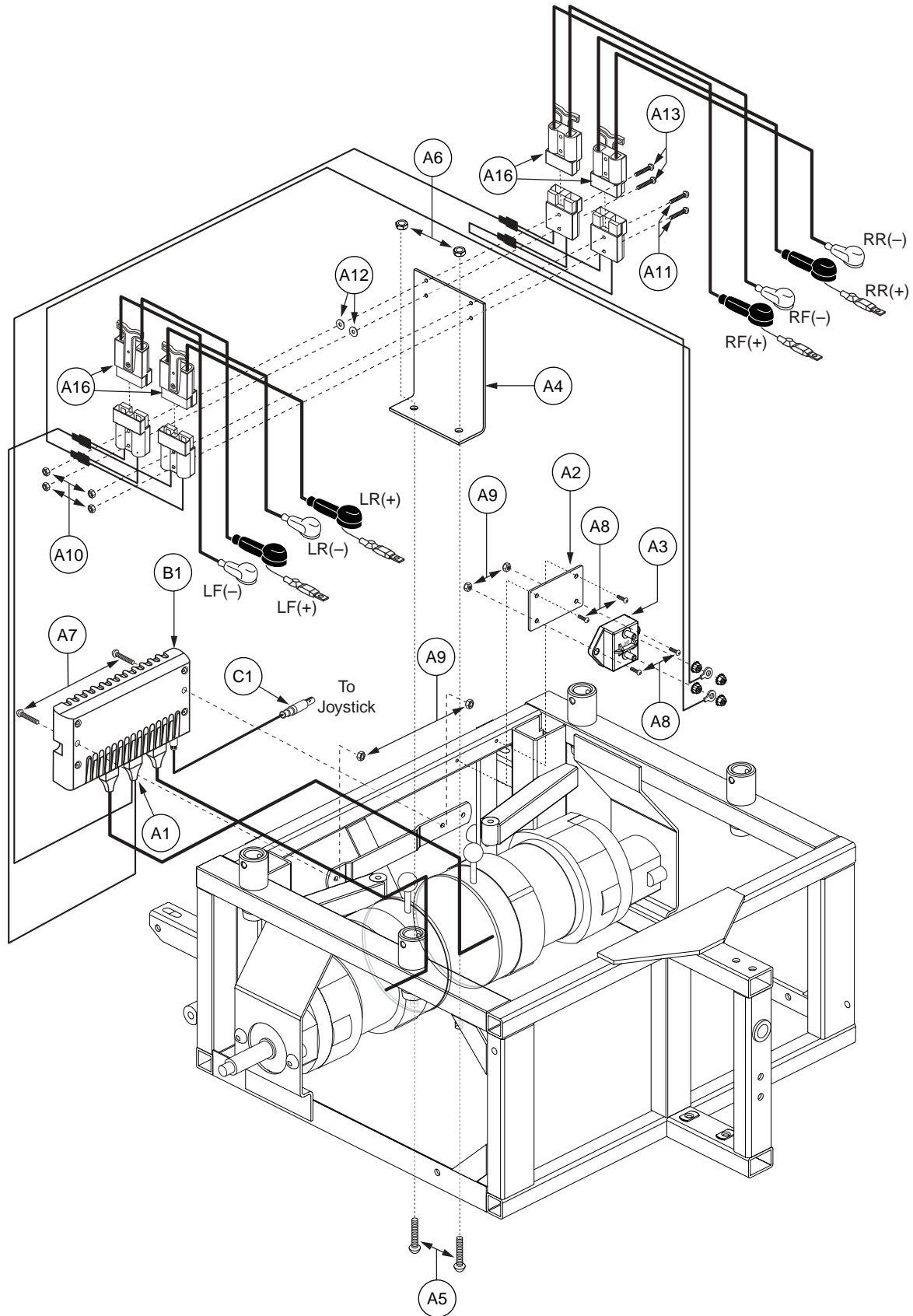


**Note: If an item has no callout, it is being shown for assembly purposes.*

REF #	PART #	DESCRIPTION	QTY	MSRP (AU\$) ¹¹ⁱ
A1 — A16	ELEASMB3619	ELECTRONIC,ASSY,REMOTE PLUS,100 AMP,JAZZY1650,OFFBOARD CHARGER,2 BATTERY SYSTEM	1	1226.3
A1	DWR1650H001	ELECTRONIC,HARNESS,BATTERY CABLE, REMOTE PLUS, 4 CONNECTIONS,H-1650-001	1	358.78
A2	DWR1650B022	CIRCUIT BREAKER MOUNTING BRACKET,B-1650-022	1	21.42
A3	ELECBRK1012	ELECTRONIC,CIRCUIT BREAKER,80 AMP,AUTO-RESET	1	117.82
A4	DWR1650C018	BATTERY QUICK CONNECT MOUNTING BRACKET,C-1650-018	1	42.84
A5	SCRASBH1022	SCREW,BHSCS,BLACK ZINC,5/16-18 X 0.750",GRADE 5	2	5.36
A6	NUTNYLK1026	NUT, NYLOCK,BLACK ZINC,5/16-18	2	5.36
A7	SCRASBH1128	SCREW,BHSCS,BLACK ZINC,10-32 X 1.50",GRADE 8	2	5.36
A8	SCRASBH1002	SCREW,BHSCS,BLACK ZINC,10-32-0.750",GRADE 8	4	5.36
A9	NUTNYLK1001	NUT,NYLOCK,BLACK ZINC,10-32	4	5.36
A10	NUTNYLK1076	NUT,NYLOCK,BLACK ZINC,6-32	4	5.36
A11	SCRASBH1019	SCREW,BHSCS,6-32 X 1.50"	2	5.36
A12	SPCNYLN1049	SPACER,WHITE,NYLON,0.140" ID X 0.50" OD X 0.3125" TH	2	5.36
A13	SCRASBH1141	SCREW,BHSCS,BLACK ZINC,6-32 X 1.750"	2	5.36
A14	PLSCOV1021	COVER,DUST,RED,RUBBER,ANDERSON CONNECTOR,(ANDERSON:134G1)	2	5.36
*A15	PLSTIE1004	TIE WRAP,BLACK,8"	1	5.36
A16	ELEASMB2868	ELECTRONIC,ASSY,BATTERY CABLE,W/125A/32V FUSEABLE LINK,QUICK DISCONNECT,H-1500-013	2	166
B1	CTLDC1365	CONTROLLER,REMOTE PLUS,100AMP,W/PROFILES,W/2.0M CABLE,POWER MODULE,H-1650-002	1	3277.26
C1	DWR1650H003	ELECTRONIC,HARNESS,2.0M L,REDEL CABLE,REMOTE PLUS,H-1650-003,(PGDT:SA74375)	1	412.34

Notes :

*A15 Not shown.

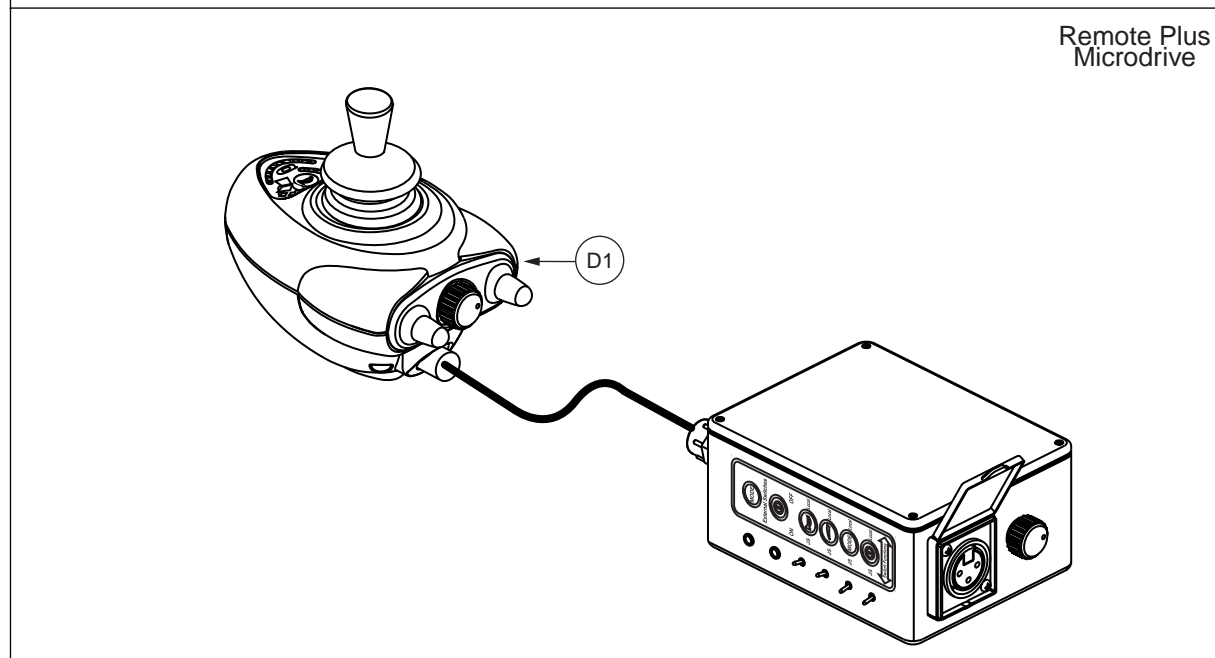
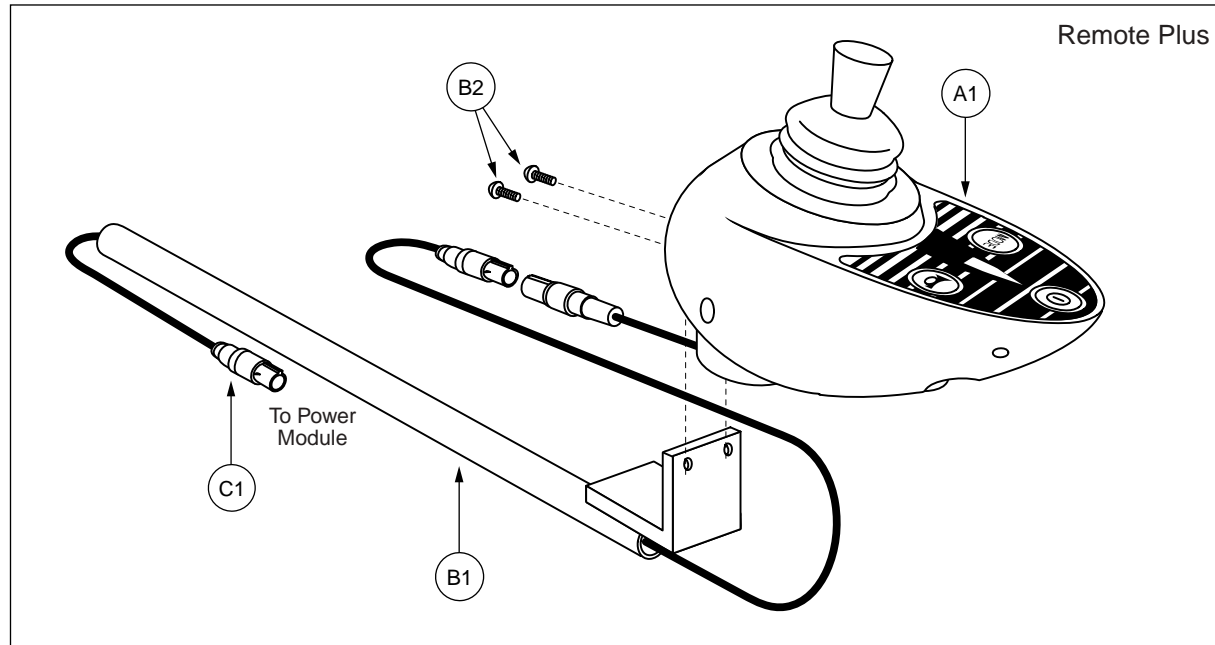


**Note: If an item has no callout, it is being shown for assembly purposes.*

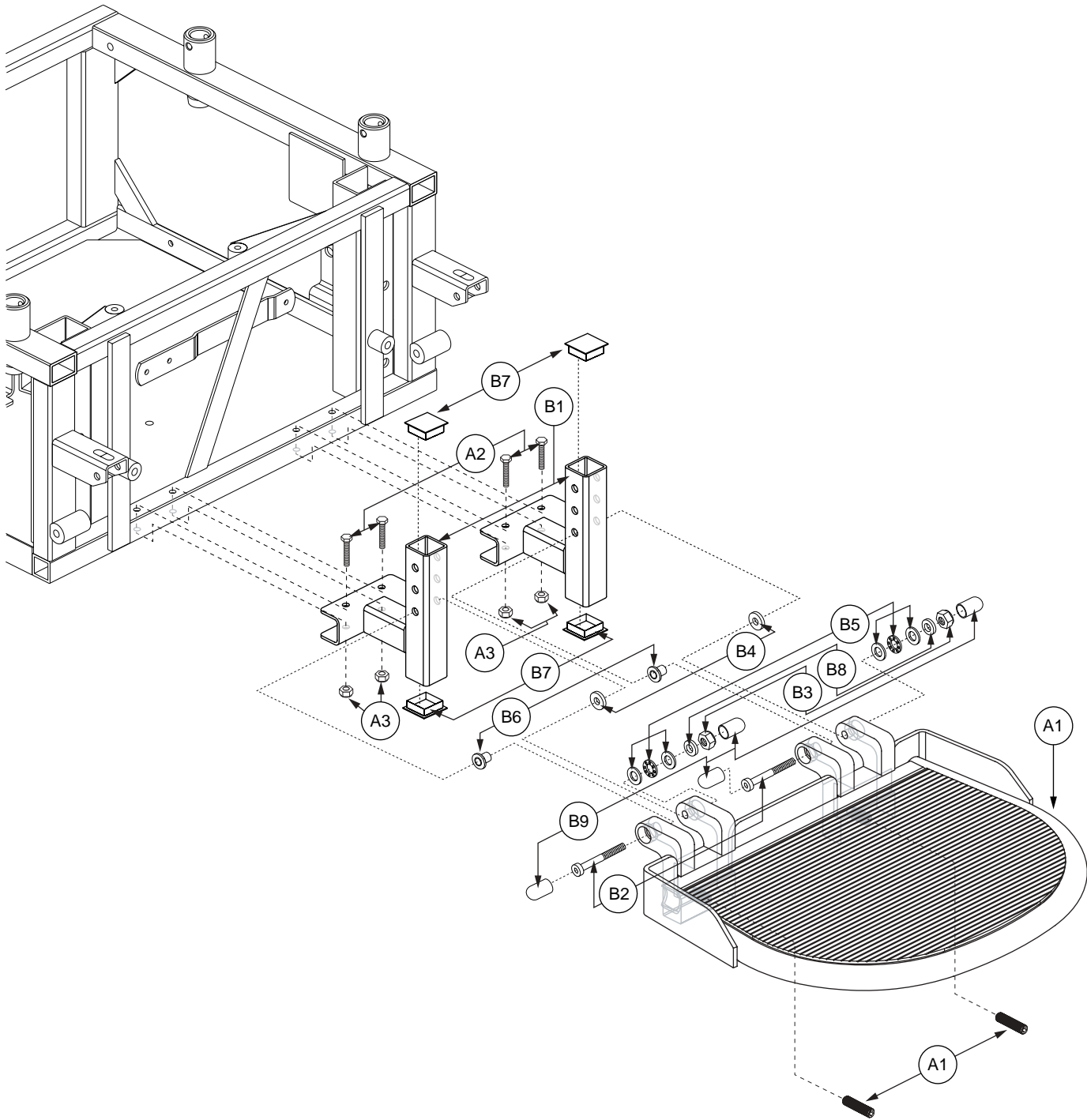
REF #	PART #	DESCRIPTION	QTY	MSRP (AU\$) ¹¹ⁱ
A1 — A16	ELEASMB3563	ELECTRONIC,ASSY,REMOTE PLUS,100 AMP,JAZZY1650,OFFBOARD CHARGER,4 BATTERY SYSTEM	1	1601.14
A1	DWR1650H001	ELECTRONIC,HARNESS,BATTERY CABLE, REMOTE PLUS, 4 CONNECTIONS,H-1650-001	1	358.78
A2	DWR1650B022	CIRCUIT BREAKER MOUNTING BRACKET,B-1650-022	1	21.42
A3	ELECBRK1012	ELECTRONIC,CIRCUIT BREAKER,80 AMP,AUTO-RESET	1	117.82
A4	DWR1650C018	BATTERY QUICK CONNECT MOUNTING BRACKET,C-1650-018	1	42.84
A5	SCRASBH1022	SCREW,BHSCS,BLACK ZINC,5/16-18 X 0.750",GRADE 5	2	5.36
A6	NUTNYLK1026	NUT, NYLOCK,BLACK ZINC,5/16-18	2	5.36
A7	SCRASBH1128	SCREW,BHSCS,BLACK ZINC,10-32 X 1.50",GRADE 8	2	5.36
A8	SCRASBH1002	SCREW,BHSCS,BLACK ZINC,10-32-0.750",GRADE 8	4	5.36
A9	NUTNYLK1001	NUT,NYLOCK,BLACK ZINC,10-32	4	5.36
A10	NUTNYLK1076	NUT,NYLOCK,BLACK ZINC,6-32	4	5.36
A11	SCRASBH1019	SCREW,BHSCS,6-32 X 1.50"	2	5.36
A12	SPCNYLN1049	SPACER,WHITE,NYLON,0.140" ID X 0.50" OD X 0.3125" TH	2	5.36
A13	SCRASBH1141	SCREW,BHSCS,BLACK ZINC,6-32 X 1.750"	2	5.36
*A14	PLSCOV1021	COVER,DUST,RED,RUBBER,ANDERSON CONNECTOR,(ANDERSON:134G1)	2	5.36
*A15	PLSTIE1004	TIE WRAP,BLACK,8"	1	5.36
A16	ELEASMB2868	ELECTRONIC,ASSY,BATTERY CABLE,W/125A/32V FUSEABLE LINK,QUICK DISCONNECT,H-1500-013	4	166
B1	CTLDC1365	CONTROLLER,REMOTE PLUS,100AMP,W/PROFILES,W/2.0M CABLE,POWER MODULE,H-1650-002	1	3277.26
C1	DWR1650H003	ELECTRONIC,HARNESS,2.0M L,REDEL CABLE,REMOTE PLUS,H-1650-003,(PGDT:SA74375)	1	412.34

Notes :

*A14 Not shown.
 *A15 Not shown.



REF #	PART #	DESCRIPTION	QTY	MSRP (AU\$) ¹¹ⁱ
A1	CTLDC1368	CONTROLLER,JOYSTICK MODULE, REMOTE PLUS,3 KEY W/PROFILES,FLYING LEAD,(P&G D50524)	1	2238.4
B1 — B2	FRMASMB2066	FIXED INLINE JOYSTICK MOUNT,ASSY,REMOTE PLUS	1	53.56
B1	DWR1200C103	MOUNTING BRACKET,JOYSTICK WELDMENT,REMOTE PLUS,INLINE,C-1200-103	1	42.84
B2	SCRPPH1006	SCREW, PPH,ELMR,8-32 X 1/2",G2	2	5.36
C1	DWR1650H003	ELECTRONIC,HARNESS,2.0M L,REDEL CABLE,REMOTE PLUS,H-1650-003,(PGDT:SA74375)	1	412.34
D1	CTLDC1369	CONTROLLER,MICRODRIVE REMOTE PLUS JOYSTICK MODULE,(P&G: D50470)	1	4433.94

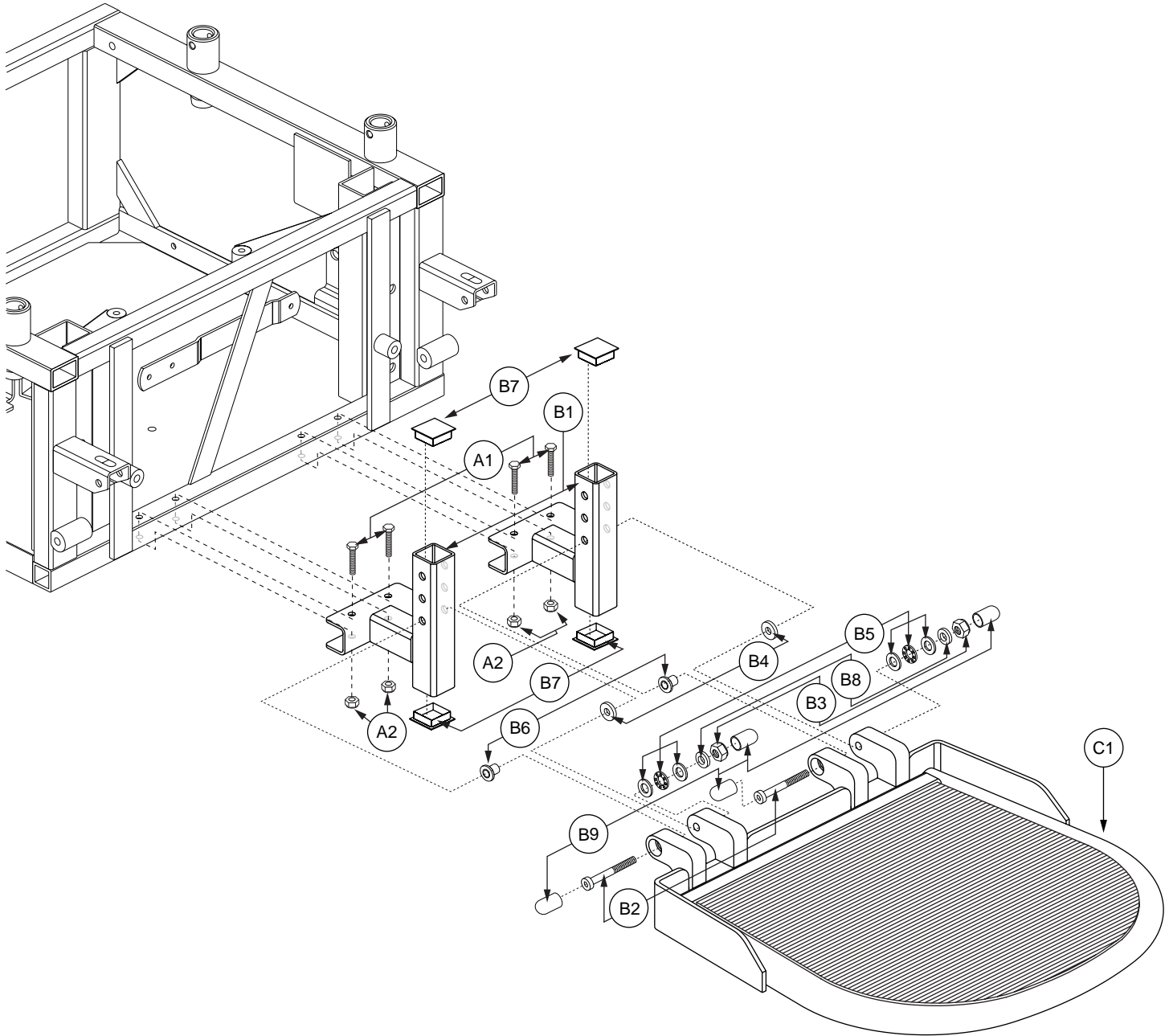


**Note: If an item has no callout, it is being shown for assembly purposes.*

REF #	PART #	DESCRIPTION	QTY	MSRP (AU\$) ¹¹ⁱ
A1 — B9	FRMASMB9496	FOOT PLATFORM,ASSY,17W X 13"D,W/MOUNTING BRACKETS,JAZZY1650	1	2516.86
*A1	FRMASMB9444	FOOT PLATFORM,ASSY,HD,17"W,13"D,W/MAT & HARDWARE,E-1650-023	1	2184.84
A2	SCRHHCS1230	SCREW,HHCS,BLACK,ZINC,1/4-20 X 1.5",GRADE 8	4	5.36
A3	NUTNJAM1014	NUT,NYLOCK JAM,BLACK ZINC,1/4-20	4	5.36
B1 — B9	FRMASMB6389	FOOT PLATFORM MOUNTING BRACKET,ASSY,JAZZY1650	1	278.46
B1	DWR1650C011	FOOT PLATFORM MOUNTING BRACKET WELDMENT,C-1650-011	2	144.58
B2	SCRSHCS1170	SCREW,SHCS,BLACK ZINC,M8-1.25 X 80MM,GRADE 12.9	2	5.36
B3	NUTNJAM1020	NUT,NYLOCK JAM,BLACK ZINC,M8-1.25	2	5.36
B4	WASNLYN1013	WASHER,NYLON,0.3125" ID X 0.875" OD X 0.125" TH	2	5.36
*B5	BRGSBTH1000	BEARING,BALL THRUST,STAINLESS STEEL,0.3125" ID X 0.625" OD X 0.193" TH,(MCMaster-CARR: 6655K34)	2	5.36
B6	DWR1000B458	FOOT PLATFORM MOUNTING SLEEVE,FLANGE,STEEL,B-1000-458	2	5.36
B7	PROECAP1030	END CAP,PLASTIC,1.25" SQUARE,FITS 12 GAUGE TUBE,RIBBED	4	5.36
B8	DWR1000B459	SPACER,STEEL,0.328" ID X 0.50" OD X 0.076" TH,B-1000-459	2	5.36
B9	PROECAP1080	CAP,VINYL,0.50" ID,FITS 0.50" - 0.5625" OD,0.50" H,(MCMaster CARR: 9753K44)	4	5.36

Notes :

- *A1 The item is a quantity of one but is illustrated as three parts for assembly purposes.
 *B5 The item is a quantity of two but is illustrated as six parts for assembly purposes.

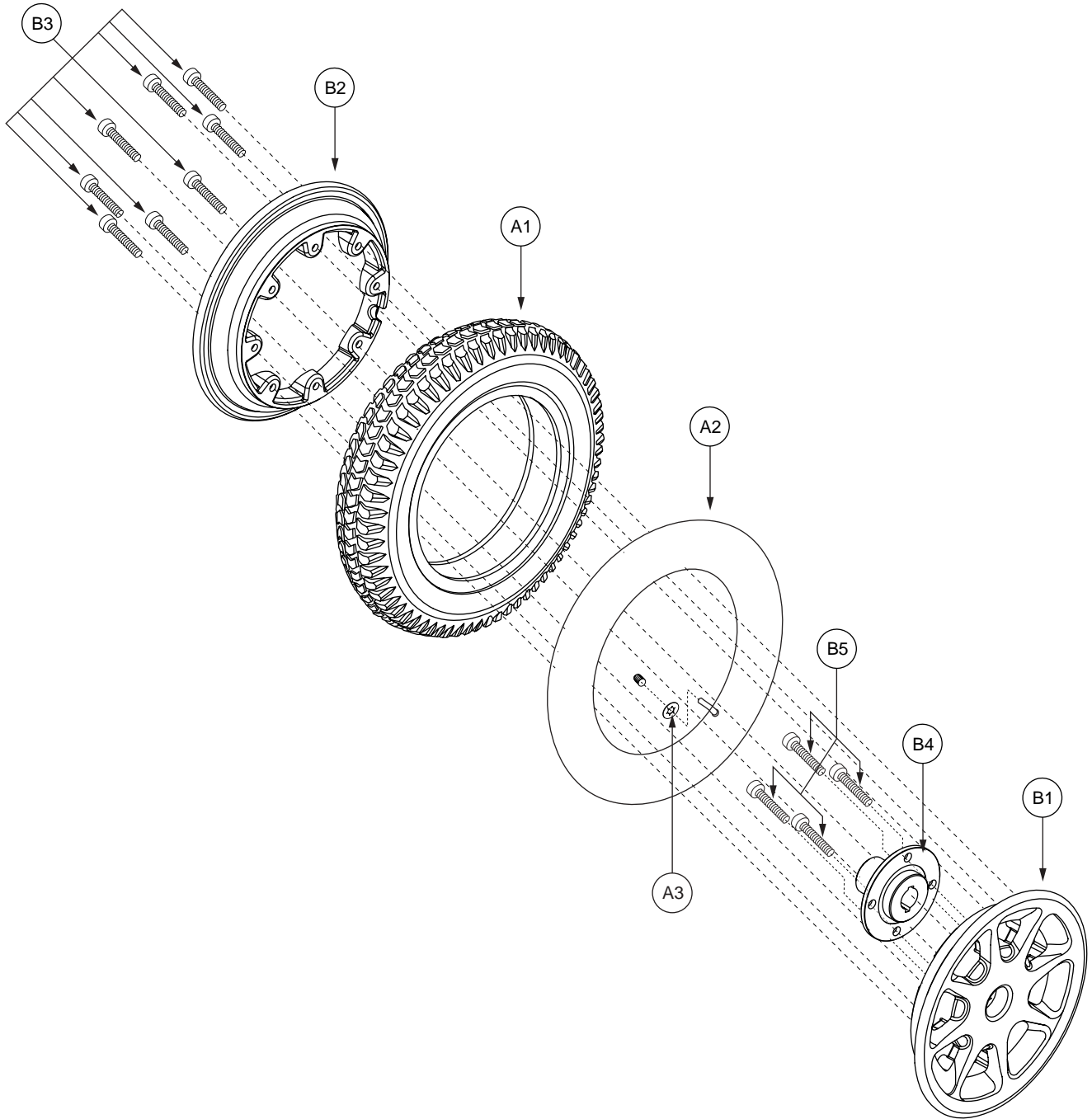


**Note: If an item has no callout, it is being shown for assembly purposes.*

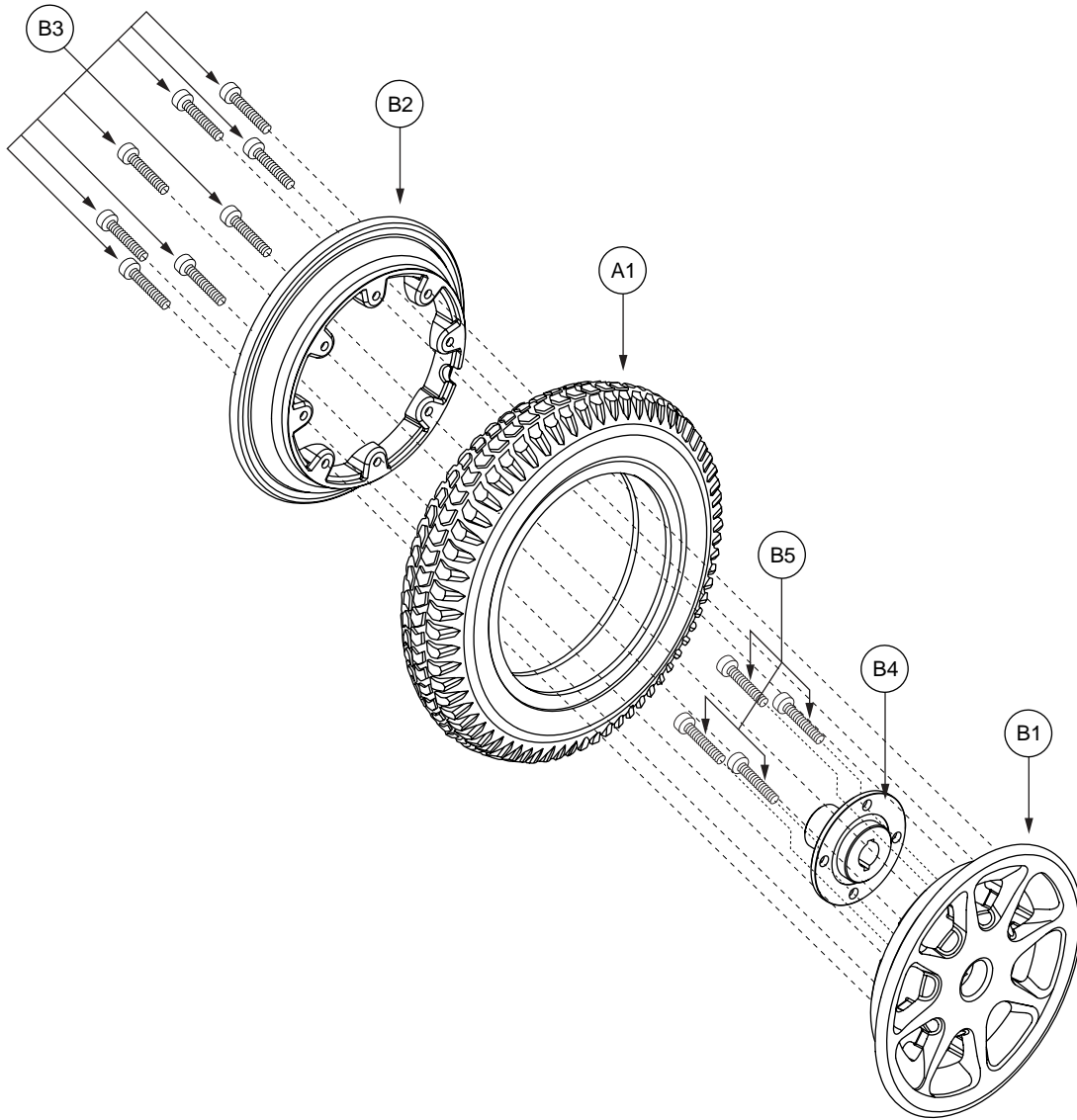
REF #	PART #	DESCRIPTION	QTY	MSRP (AU\$) ¹¹ⁱ
A1 — C1	FRMASMB6390	FOOT PLATFORM,ASSY,17W X 16"D,W/MOUNTING BRACKETS,JAZZY1650	1	2115.22
A1	SCRHHCS1230	SCREW,HHCS,BLACK,ZINC,1/4-20 X 1.5",GRADE 8	4	5.36
A2	NUTNJAM1014	NUT,NYLOCK JAM,BLACK ZINC,1/4-20	4	5.36
B1 — B9	FRMASMB6389	FOOT PLATFORM MOUNTING BRACKET,ASSY,JAZZY1650	1	278.46
B1	DWR1650C011	FOOT PLATFORM MOUNTING BRACKET WELDMENT,C-1650-011	2	144.58
B2	SCRSHCS1170	SCREW,SHCS,BLACK ZINC,M8-1.25 X 80MM,GRADE 12.9	2	5.36
B3	NUTNJAM1020	NUT,NYLOCK JAM,BLACK ZINC,M8-1.25	2	5.36
B4	WASNLYN1013	WASHER,NYLON,0.3125" ID X 0.875" OD X 0.125" TH	2	5.36
*B5	BRGSBTH1000	BEARING,BALL THRUST,STAINLESS STEEL,0.3125" ID X 0.625" OD X 0.193" TH,(MCMaster-CARR: 6655K34)	2	5.36
B6	DWR1000B458	FOOT PLATFORM MOUNTING SLEEVE,FLANGE,STEEL,B-1000-458	2	5.36
B7	PROECAP1030	END CAP,PLASTIC,1.25" SQUARE,FITS 12 GAUGE TUBE,RIBBED	4	5.36
B8	DWR1000B459	SPACER,STEEL,0.328" ID X 0.50" OD X 0.076" TH,B-1000-459	2	5.36
B9	PROECAP1080	CAP,VINYL,0.50" ID,FITS 0.50" - 0.5625" OD,0.50" H,(MCMaster CARR: 9753K44)	4	5.36
C1	FRMASMB7943	FOOT PLATFORM,ASSY,HD,17"W,16"D,W/MAT & HARDWARE,E-1650-021	1	1938.52

Notes :

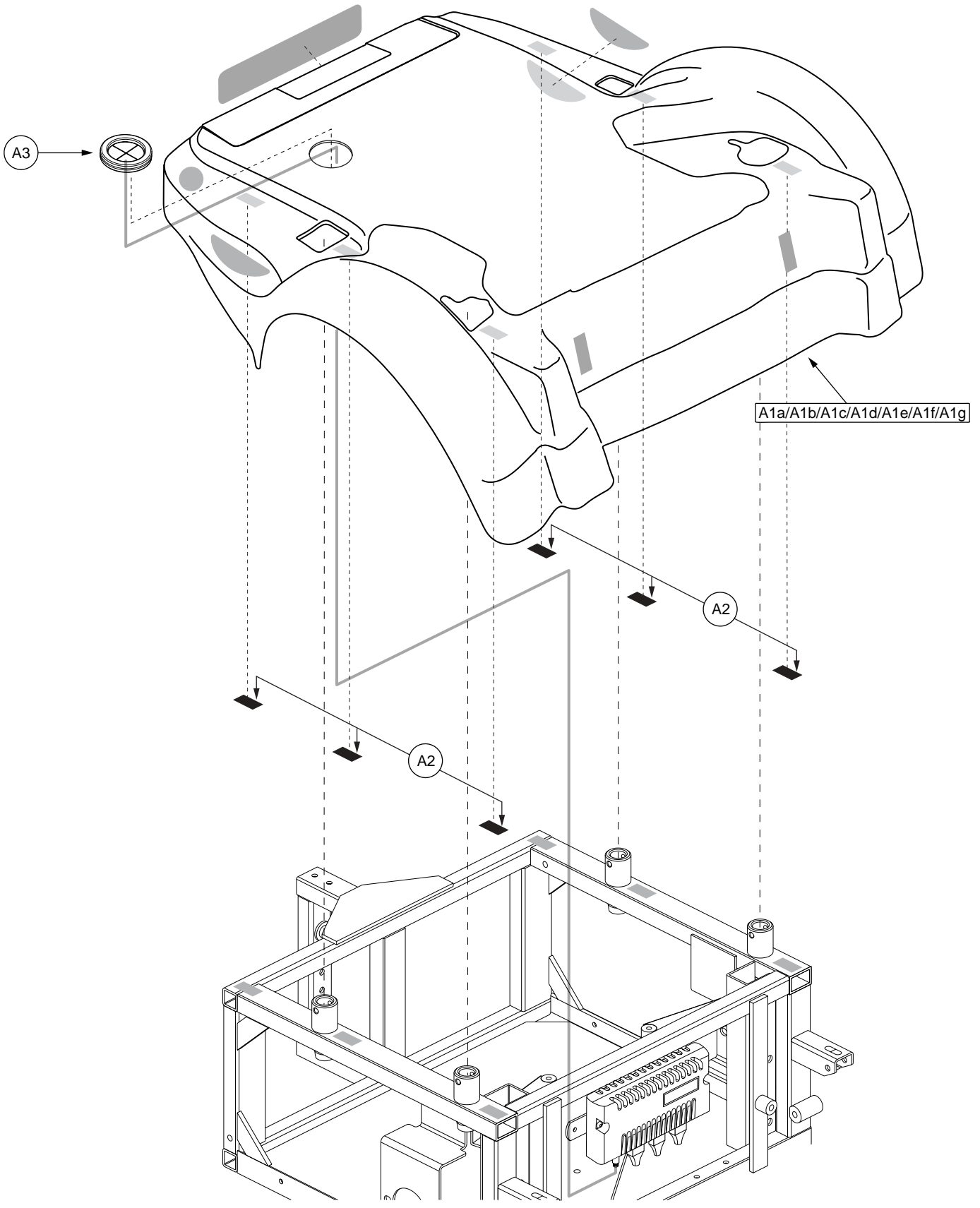
*B5 The item is a quantity of two but is illustrated as six parts for assembly purposes.



REF #	PART #	DESCRIPTION	QTY	MSRP (AU\$) ¹¹ⁱ
A1 — B5	WHLASMB1551	WHEEL, ASSY, DRIVE, PNEUMATIC, 4.00 X 8", HONEYCOMB, C-168, 3-PIECE RIM W/ FORGED STEEL HUB, 19MM BORE & DOUBLE KEYWAY, E-1650-007	2	348.08
A1	TIRPNEU1017	TIRE, PNEUMATIC, 400-8X16", C-168-7	1	112.46
A2	TUBSTND1017	TUBE, 3.50/4.00-8, ANGLED VALVE W/CAP	1	32.14
A3	DWR7700A010	SLIP COVER, VALVE STEM, 35PSI, 2.4 BAR, MAX RATING, A-7700-010	1	5.36
B1 — B5	WHLASMB1552	WHEEL, ASSY, RIM, 3.00 X 8", HONEYCOMB, 3-PIECE W/FORGED STEEL HUB, 19MM BORE & DOUBLE KEYWAY	1	187.42
B1	DWR1200E221	WHEEL, RIM, ALUMINUM, 3.00-8", OUTER, 8" HONEYCOMB, W/HUB MOUNTING HOLES, E-1200-221	1	N/A
B2	WHLRIMS1051	WHEEL, RIM, ALUMINUM MAG, JAZZY1120/1170	1	26.78
B3	SCRALNH1033	SCREW, SHCS, BLACK ZINC, 1/4-20 X 0.75", W/NYLON PATCH	8	5.36
B4	DWR1650C012	WHEEL, HUB, FORGED STEEL, 2.750"BC X 3.375"DIA X 1.900"TH, MODIFIED, W/ 19MM BORE & DOUBLE KEYWAY, C-1650-012	1	262.4
B5	SCRSHCS1088	SCREW, SHCS, BLACK OXIDE, 5/16-24 X 1.00", W/OIL RESISTANT LOCTITE	4	5.36



REF #	PART #	DESCRIPTION	QTY	MSRP (AU\$) ¹¹ⁱ
A1 — B5	WHLASMB1558	WHEEL,ASSY,FLAT FREE,4.00 X 8",DRIVE WHEEL,HONEYCOMB,C-168,3-PIECE RIM W/19MM KEYWAY,HIGH DENSITY FOAM,E-1000-174	2	551.56
A1	TIRSOLI1045	TIRE,FLAT FREE INSERT,400-8 X 16,HIGH DENSITY FOAM,C-168	1	224.92
B1 — B5	WHLASMB1552	WHEEL,ASSY,RIM,3.00 X 8",HONEYCOMB,3-PIECE W/FORGED STEEL HUB,19MM BORE & DOUBLE KEYWAY	1	187.42
B1	DWR1200E221	WHEEL,RIM,ALUMINUM,3.00-8",OUTER, 8" HONEYCOMB, W/HUB MOUNTING HOLES,E-1200-221	1	N/A
B2	WHLRIMS1051	WHEEL,RIM,ALUMINUM MAG,JAZZY1120/1170	1	26.78
B3	SCRALNH1033	SCREW,SHCS,BLACK ZINC,1/4-20 X 0.75",W/NYLON PATCH	8	5.36
B4	DWR1650C012	WHEEL,HUB,FORGED STEEL,2.750"BC X 3.375"DIA X 1.900"TH,MODIFIED,W/ 19MM BORE & DOUBLE KEYWAY,C-1650-012	1	262.4
B5	SCRSHCS1088	SCREW,SHCS,BLACK OXIDE,5/16-24 X1.00",W/OIL RESISTANT LOCTITE	4	5.36

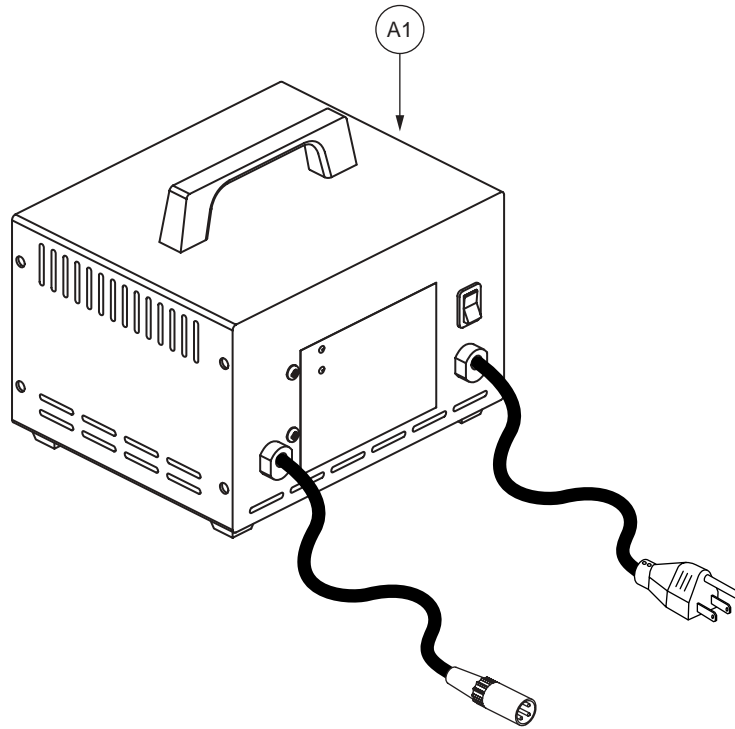


REF #	PART #	DESCRIPTION	QTY	MSRP (AU\$) ¹¹ⁱ
A1a — A3	SHDASMB3930	SHROUD,ASSY,GREEN,JAZZY1650	1	626.54
A1a	SHDPNTD2316	SHROUD,PAINTED,GREEN,JAZZY1650	1	621.18
A1b — A3	SHDASMB3931	SHROUD,ASSY,RED,JAZZY1650	1	626.54
A1b	SHDPNTD2317	SHROUD,PAINTED,RED,JAZZY1650	1	915.7
A1c — A3	SHDASMB3932	SHROUD,ASSY,VIPER BLUE,JAZZY1650	1	626.54
A1c	SHDPNTD2318	SHROUD,PAINTED,VIPER BLUE,JAZZY1650	1	621.18
A1d — A3	SHDASMB3935	SHROUD,ASSY,GRAY,JAZZY1650	1	626.54
A1d	SHDPNTD2321	SHROUD,PAINTED,GRAY,JAZZY1650	1	621.18
A1e — A3	SHDASMB3936	SHROUD,ASSY,CHAMPAGNE,JAZZY1650	1	626.54
A1e	SHDPNTD2322	SHROUD,PAINTED,CHAMPAGNE,JAZZY1650	1	621.18
A1f — A3	SHDASMB3938	SHROUD,ASSY,BLACK,JAZZY1650	1	626.54
A1f	SHDPNTD2324	SHROUD,PAINTED,BLACK,JAZZY1650	1	621.18
*A1g — A3	SHDASMB4385	SHROUD,ASSY,CUSTOM COLOR,JAZZY1650	1	N/A
A1g	SHDPNTD2625	SHROUD,PAINTED,CUSTOM COLOR,JAZZY1650	1	N/A
A2	VELHOOK1007	FASTENER,1" X 1 1/2",REUSABLE, HOOK	6	5.36
A3	GRMRUB1008	GROMMET,RUBBER,1.125"ID X 1.875"OD,W/ FLAPS	1	5.36

Notes :

Top-level assemblies will include components designated with corresponding lower-case letters. Painted shrouds are not available individually. The assembly must be purchased. Parts without lower-case letters will be included in all top-level assemblies.

***A1g — A3** Custom color shrouds are available for Domestic and Canada units only. Please contact Pride Technical Service for more information.



REF #	PART #	DESCRIPTION	QTY	MSRP (AU\$) ¹¹ⁱ
A1	ELE110V1041	CHARGER,OFFBOARD, LOW INHIBIT,110V, 8AMP,H-1010-054,(LESTER:18330-48)	1	1006.74

Owner's Package

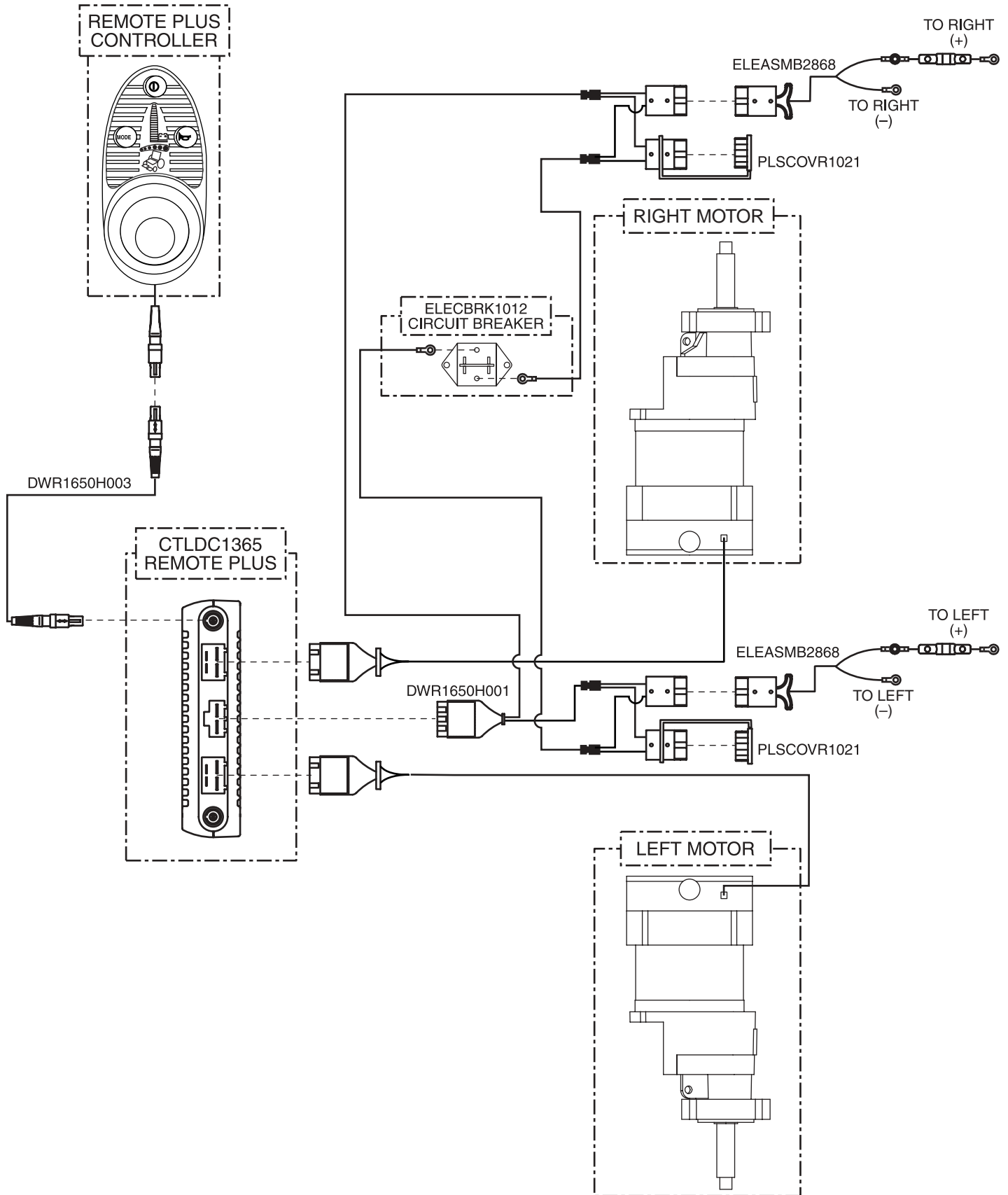
REF #	PART #	DESCRIPTION	QTY	MSRP (AU\$) ¹¹ⁱ
*N/A	INDASMB1418	OWNER'S PACKAGE,ASSY,JAZZY1650,AUSTRALIA	1	53.56
*N/A	INFMANU2544	MANUAL,OWNER'S,QUANTUM 1650,AUSTRALIA	1	37.48
*N/A	PLSTIE1004	TIE WRAP,BLACK,8"	5	5.36
*N/A	PROSCUF1007	SCUFF GUARD,REAR JAZZY,LEFT/RIGHT PAIR	1	5.36
*N/A	PROZBAG1003	BAG,10"L X 12"W X 2MM,ZIPLOCK	1	6
*N/A	INFINFB1149	MANUAL,WARRANTY CARD,AUSTRALIAN	1	5.36
*N/A	INFINFB1841	MANUAL,INSTALLATION INSTRUCTIONS,CONTROLLER CABLE ROUTING,CONTOURED SEAT	1	5.36
*N/A	DWR1020L003	HANG TAG,FULLY RECHARGE BATTERY BEFORE INITIAL USE,6-1/4" X 3-3/8",L-1020-003	1	5.36

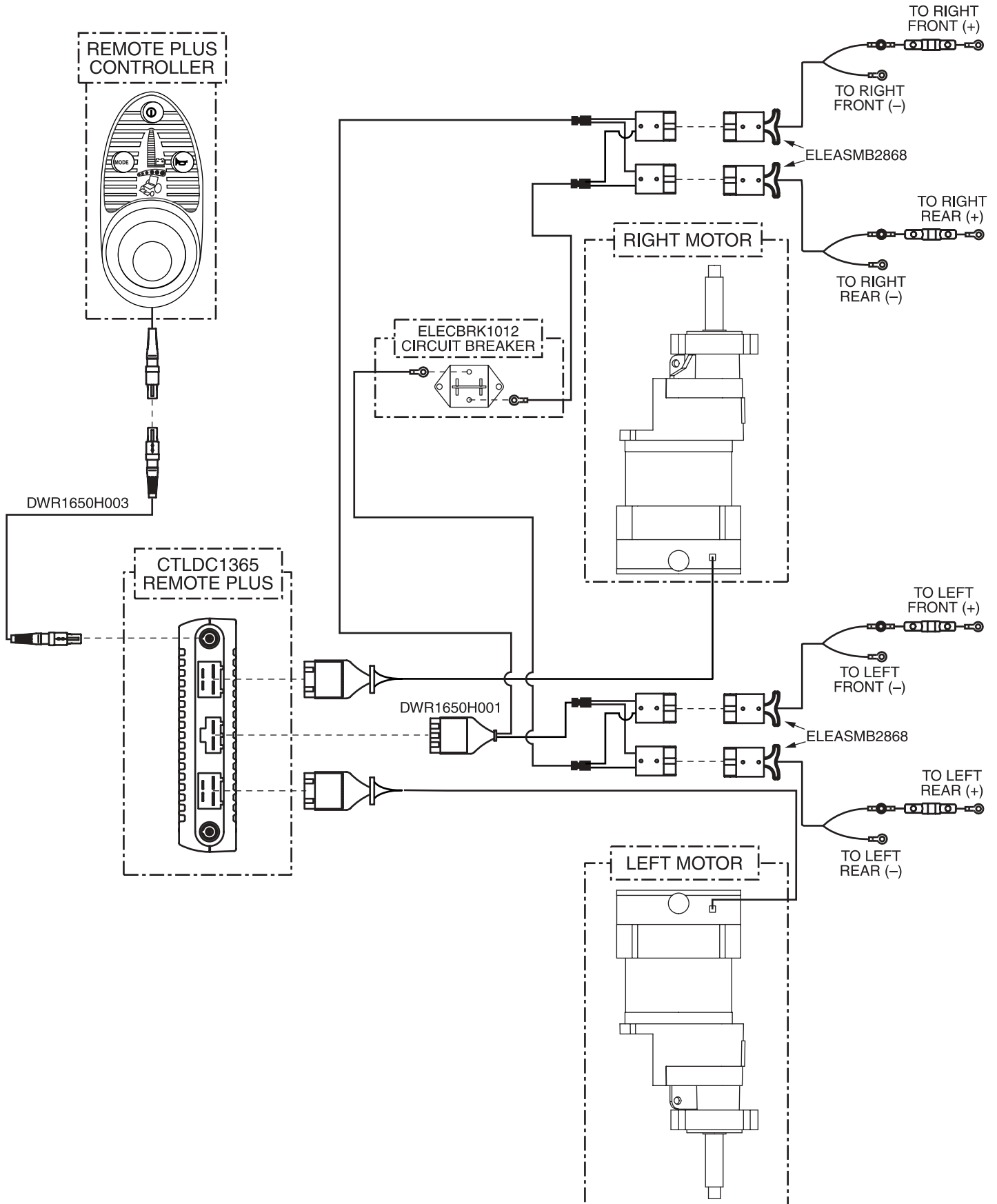
Decal Package

REF #	PART #	DESCRIPTION	QTY	MSRP (AU\$) ¹¹ⁱ
*N/A	DECASMB1407	DECAL,ASSY,JAZZY1650,AUSTRALIA	1	N/A
*N/A	DECINDV1236	DECAL,1 3/4"L X 1/2"H,ELECTRICAL APPROVAL,C-TICK DECAL,SILVER,L-1234-569	1	5.36
*N/A	DWG1000L010	DECAL,CAUTION - OPERATIONAL INSTRUCTION,ARM COVER	1	5.36
*N/A	DWR1000L025	DECAL,POWERCHAIR,US AND FOREIGN PATENTS PENDING,DOMESTIC,L-1000-025	1	6
*N/A	DWR1234L002	DECAL,ICON,20V/M,EMI-RFI,L-1234-002	1	5.36
*N/A	DWR1234L003	DECAL,ICON,DO NOT ADJUST ANTI-TIP,1.50" DIAMETER,L-1234-003	2	5.36
*N/A	DWR1234L008	DECAL,ICON,EXTENSION CORD/GROUNDING PRONG,L-1234-008	1	5.36
*N/A	DWR1234L011	DECAL,ICON,BATTERY CORROSIVE CHEMICALS WARNING,L-1234-011	1	5.36
*N/A	DWR1234L012	DECAL,ICON,1.5",READ OWNERS MANUAL,L-1234-012	1	5.36
*N/A	DWR1234L075	DECAL,NAME,QUANTUM 1650, SIDE,L-1234-075	2	5.36
*N/A	DWR1234L076	DECAL,NAME,QUANTUM1650,REAR,L-1234-076	1	5.36
*N/A	DWR1234L090	DECAL,ICON,BATTERY CONNECTION,4 BATTERIES,JAZZY1650,L-1234-090	1	5.36
*N/A	DWR1234L101	DECAL,ICON,BATTERY CONNECTION,2 BATTERIES,JAZZY1650,L-1234-101	1	5.36
*N/A	DWR1234L109	DECAL,ICON,MAXIMUM WEIGHT CAPACITY 650 LBS/295 KG,L-1234-109	1	5.36
*N/A	DWR1234L110	DECAL,ICON,FREEWHEEL RELEASE,PULL-NEUTRAL/PUSH-DRIVE,L-1234-110	2	5.36
*N/A	DWR1234L145	DECAL,ICON,1" X 2.5",WEATHER/MANUAL/EMI,L-1234-145	1	5.36
*N/A	DWR1000L051	DECAL,SHIPPING CARTON, PRIDE AUSTRALIA PROPERTY STATEMENT	1	N/A
*N/A	DWR1234L624	DECAL,ICON,WARNING,CONTROLLER CORD PLACEMENT,ENGLISH,L-1234-624	1	5.36

Notes :

*N/A Not applicable.





Pride

Illustrated Parts Breakdown

www.pridemobility.com

Pride Mobility Products Corporation
182 Susquehanna Avenue
Exeter, PA 18643
USA

Pride Mobility Products Company
380 Vansickle Road Unit 350
St. Catharines, Ontario L2R 6P7
Canada

Pride Mobility Products Ltd.
Unit 106, Heyford Park Camp Road
Upper Heyford, Oxfordshire OX25 5HA

Pride Mobility Products Australia Pty. Ltd.
21 Healey Road
Dandenong, 3175
Victoria, Australia

Pride Mobility Products Italia S.r.l.
Via del Progresso - ang. Via del Lavoro
Loc. Prato della Corte
00065 - Fiano Romano (RM)

Pride Mobility Products Europe B.V.
Tijnmuiden 28
1046 AL Amsterdam
The Netherlands